

CONSISTENT POLISHING RESULTS

thanks to newly designed fixture-to-platen locking mechanism



New design integrated load cell, encapsulated within the metalwork of the polishing head for better protection.

The APC-8000 delivers polishing results exceeding Telcordia GR-326-CORE requirements for end face geometry on all industry standard connectors and ferrules*



LC Fixture 24 positions

EASY TO USE

Expanded Software Capability

- Stores up to 35 recipes
- 10 programmable steps per recipe
- Digital display indicates film type, pressure, speed & other conditions
- Polishing procedure can be paused and started again from point of interruption

Safety Features

- CE Approved
- Emergency stop button
- Machine will not operate unless all components are correctly aligned
- Password protection ensures against unauthorized use

Fixtures

- New fixtures hold between 12 to 36 connectors or ferrules, depending on connector type
- Fixtures from previous models (APC-7000 and APC-9000) may be adjusted for full compatibility with the APC-8000

Features

- Consistent polishing results compared to other free-floating fixture machines
- High polishing throughput due to variable platen speeds 60 - 300 RPM in 1 RPM increments.
- Easy to use and minimal maintenance required thanks to expanded software and new design
- Improved safety features

Connector Capability

- LC-UPC, LC-APC, MU-UPC
- SC-UPC, SC-APC, FC-UPC, FC-APC, ST-UPC
- E-2000™ UPC, E-2000™ APC
- MT-RJ, MT, Angled MT
- Custom fixtures available upon request

Fixture-to-Platen Locking Mechanism

- Incorporates 3 locator posts within fixture that mate with slots in safety cover assembly to lock firmly into place
- Locking mechanism confines fixture motion to vertical plane, compensating for different ferrule lengths
- End result: excellent polishing results with consistent endface geometry and apex offset

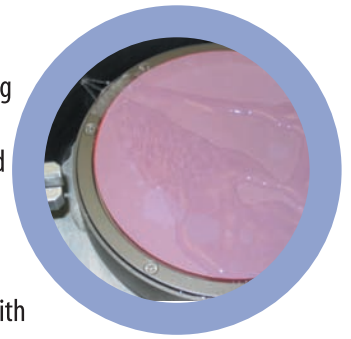
**When following SENKO recommended products and procedures.*

Other Features

- Gradual RPM increase and decrease minimizes possibility of fiber breakage
- Fiber cable support accommodates various patch cord lengths
- 3-stream water jet results in better water distribution
- User can polish as little as 3 connectors at a time
- New 12kg maximum load for polishing compared to 9kg on previous model.
- New polishing head park facility which enables easier shipping and polishing head protection during transportation.

Safety Cover Assembly

- Confines water from hose to polishing area only
- Contains a labyrinth seal for enhanced water resistance
- Water hose is positioned on back of safety cover assembly to minimize interference with user
- One-piece water tray collects polishing runoff
- Polisher does not require frequent lubrication



POLISHING FIXTURE PACKAGES

PRECISION FIXTURE TOOLING

- Highly durable
- Corrosion resistant
- Custom development available



FC Fixture 18 positions



MT Fixture 12 positions

Slots in the safety cover assembly mate with locator posts in the fixture during polishing

POLISHING RUBBER PADS

All rubber pad consumables are certified for hardness and parallelism. Pads are available with durometer specifications and color coding found below.

