

SC UPC STANDARD

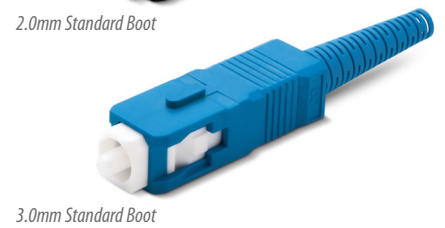
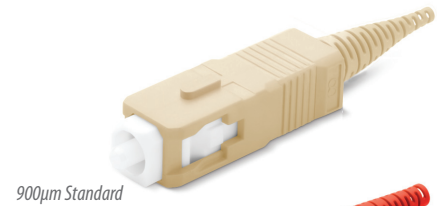
| CONNECTOR | | FERRULE TYPE | HOUSING | BOOT TYPE | | BOOT COLOR | | | |
|-----------|----------|--------------|----------------------|-----------|-------|------------|----------------|---|--------|
| 231 | Standard | 191 | SM: Standard 125.5µm | 5 | Aqua | P | Standard 3.0mm | 1 | Blue |
| | | 291 | MM: Standard 127µm | 6 | Blue | N | Standard 2.0mm | 2 | Black |
| | | | | 7 | Black | M | Standard 900µm | 4 | Red |
| | | | | 8 | Red | J | MINI 900µm | 6 | Yellow |
| | | | | 9 | Beige | | | 8 | Beige |

231 - 191 - 7N4 ORDER CODE example

Features:

- Pre-assembled one piece design to reduce assembly time
- Typical IL against master to be 0.12dB Max 0.3dB
- Meets and exceeds the TIA/EIA, IEC and JIS SC Specification
- Crimp tool to be used CRT-401

1 PC Connector (231 Series)



SC CONNECTOR KIT

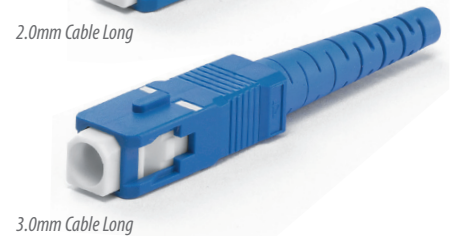
| CODE | OUTER HOUSING | BOOT TYPE | BOOT COLOR | | | |
|------|---------------|-----------------------|------------|-----------------------|---|-------|
| 132 | A11 | Blue with White Line | 7 | 3.0mm Cable Long | 1 | Blue |
| | B11 | Black with White Line | 9 | 2.0mm Cable Long | 2 | Black |
| | C11 | Beige with White Line | D | 900µm MINI Fiber Boot | 3 | Green |
| | D11 | Green with White Line | | | 4 | Red |
| | | | | | 8 | Beige |

132 - A11 - 71 ORDER CODE example

Features:

- The original NTT Style Connector Kit design (*Multi Piece Connector*)
- Various housing and boot color to meet customer need.
- Meets and exceeds the TIA/EIA, IEC and JIS SC Specification
- Ferrule to be ordered separately
- Crimp tool to be used CRT-501

NTT Kit Style (132 Series)



SC DUPLEX CLIP

| CLIP | CLIP COLOR | | |
|------|---|-----|-------|
| 224 | SC Duplex Clip for Premium Connector | 591 | Black |
| 274 | SC Duplex Clip for Standard & Connector Kit | 592 | Green |
| | | 593 | Blue |
| | | 594 | Beige |
| | | 595 | Red |
| | | 596 | Aqua |

224 - 591 ORDER CODE example

