

**Field Installable**

# Q-XP PREMIUM SC CONNECTOR

Q-XP is SENKO's highest performing field installable connector. This GR-1081 tested connector provides Telecom grade performance while yielding maximum mechanical and optical characteristics.

| SPECIFICATION                | SINGLEMODE                 |
|------------------------------|----------------------------|
| <b>For Q-XP Fit</b>          | <b>Typical</b>             |
| <b>Insertion Loss</b>        | ≤ 0.25dB                   |
| <b>Return Loss</b>           | ≥65dB                      |
| <b>Durability</b>            | <0.1dB change, 500 matings |
| <b>Operating Temperature</b> | -40°C to +75°C             |
| <b>Storage Temperature</b>   | -40°C to +85°C             |
| <b>Tensile</b>               | TIA/EIA 568-C.3            |
| <b>Intermateability</b>      | IEC 61754-4                |



**Highlight:**

- No Polishing
- No Crimp Tools
- No Adhesives
- No expensive fusion splicer

*Note: Specifications shown above were obtained using SENKO recommended products and procedures.*



Q-XP Fit SC Connector

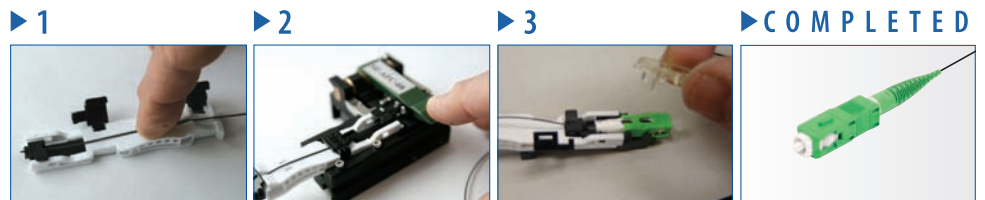
| CODE | FERRULE TYPE      | OUTER HOUSING | BOOT TYPE | BOOT COLOR |
|------|-------------------|---------------|-----------|------------|
| QXP  | Q-XP SC Connector | 091 SM: APC   | 4 Green   | 3 Green    |
|      |                   |               | 1 900µm   |            |
|      |                   |               | 2 1.65mm  |            |
|      |                   |               | 3 2.0mm   |            |
|      |                   |               | 4 3.0mm   |            |

QXP 091 413 ORDER CODE example

- Note:**
1. The connector performance specifications include an internal mechanical splice
  2. Typical specification values are at 23°C ±5°C

**Features:**

- Mechanical Splice (index matching gel)
- Highly Stable & Reliable
- RoHS Compliant
- GR-1081 completed
- Termination under 3 minutes
- Finished Connector meets UL94-V0 Flammability Rated
- 92% yield
- TIA/EIA 568-C.3 Compliant



# XP FIT PLUS SC CONNECTOR

**Field Installable**

The XP Fit Plus is a pre-polished, pre-assembled connector compatible with the standard SC connector. In place of epoxy, an internal mechanical grip gently but effectively holds the fiber in place and can be installed in under

two minutes. Without polishing or adhesives, the XP Fit Plus makes field installations quick and easy, eliminating the need for epoxy curing and hand polishing at the work site.

| SPECIFICATION                | SINGLEMODE                 | MULTIMODE |
|------------------------------|----------------------------|-----------|
| <b>For XP Fit Plus SC</b>    | <b>Typical</b>             |           |
| <b>Insertion Loss</b>        | 0.2dB (PC) and 0.3dB (APC) | 0.1dB     |
| <b>Return Loss</b>           | 55dB (PC)<br>60dB (APC)    | 35dB      |
| <b>Durability</b>            | <0.1dB change, 500 matings |           |
| <b>Operating Temperature</b> | -40°C to +75°C             |           |
| <b>Tensile</b>               | TIA/EIA 568-C.3            |           |
| <b>Intermateability</b>      | IEC 61754-4                |           |

*Note: Specifications shown above were obtained using SENKO recommended products and procedures.*

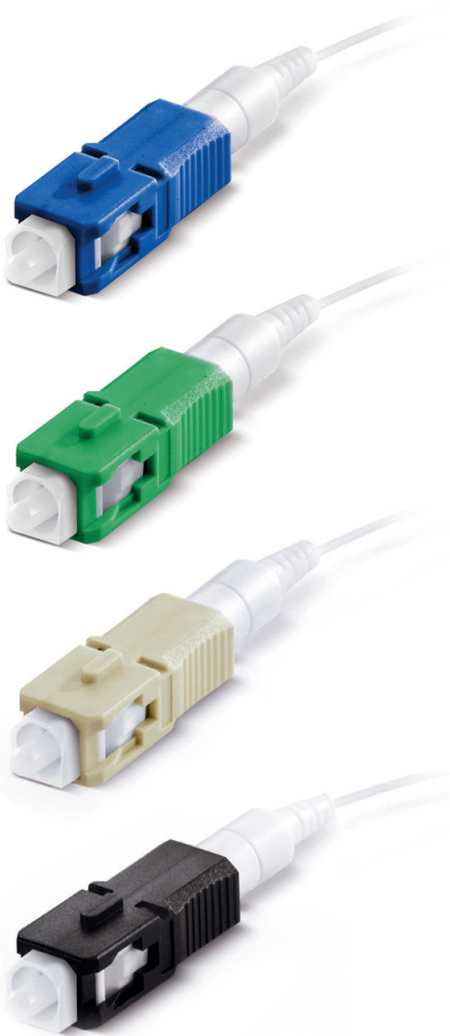
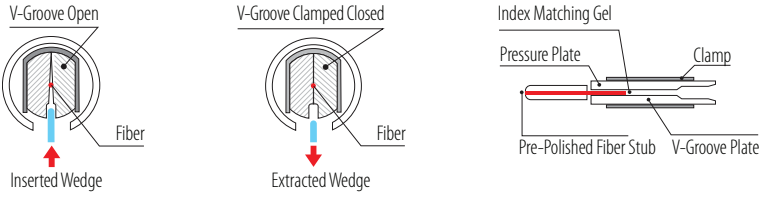
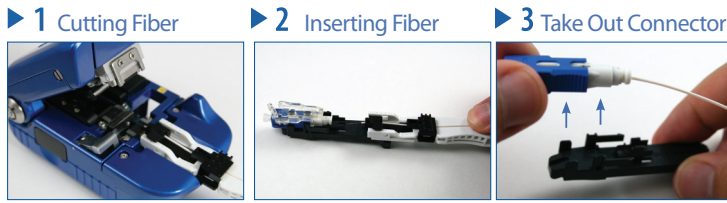
| PART NUMBER | DESCRIPTION  | HOUSING | BOOT COLOR |
|-------------|--|---------|------------|
| 318-191-627 | XPFit Plus SC Connector SM: PC 900µm/250µm 120pack*            | Blue    | White      |
| 318-091-427 | XPFit Plus SC Connector SC: APC 900µm/250µm 120pack*           | Green   | White      |
| 318-291-727 | XPFit Plus SC Connector MM: 50/125 900µm/250µm 120pack*        | Black   | White      |
| 318-391-927 | XPFit Plus SC Connector MM : 62.5/125 900µm/250µm 120pack*     | Beige   | White      |
| 318-491-527 | XPFit Plus SC Connector MM: 50/125 10G OM3900µm/250µm 120pack* | Aqua    | White      |
| 318-091-452 | XPFIT Plus SC Connector SC: APC Drop Cable 120pack*            |         |            |

318-191-627 ORDER CODE example

- Note:**
1. 12 pack available. Add -12 to existing part number
  2. Typical specification values are at 23°C ±5°C
  3. The connector performance specifications include an internal mechanical splice

## ASSEMBLY PROCEDURE

- NO EPOXY  
- NO POLISHING



*XP Fit Plus SC Field Installable Connector*

## XP FIT PLUS LC CONNECTOR



**FIT PLUS**

The XP Fit Plus is a pre-polished, pre-assembled connector compatible with the standard LC connector. In place of epoxy, an internal mechanical grip gently but effectively holds the fiber in place and can be installed in under

two minutes. Without polishing or adhesives, the XP Fit Plus makes field installations quick and easy, eliminating the need for epoxy curing and hand polishing at the work site.

| SPECIFICATION                | SINGLEMODE                 | MULTIMODE |
|------------------------------|----------------------------|-----------|
| <b>For XP Fit Plus LC</b>    | <b>Typical</b>             |           |
| <b>Insertion Loss</b>        | 0.2dB (PC)                 | 0.1dB     |
| <b>Return Loss</b>           | 55dB (PC)                  | 35dB      |
| <b>Durability</b>            | <0.1dB change, 500 matings |           |
| <b>Operating Temperature</b> | -40°C to +75°C             |           |
| <b>Tensile</b>               | TIA/EIA 568-C.3            |           |
| <b>Intermateability</b>      | IEC 61754-20               |           |

Note: \* Specifications shown above were obtained using SENKO recommended products and procedures.

| PART NUMBER | DESCRIPTION   | HOUSING | BOOT COLOR |
|-------------|---|---------|------------|
| 951-191-111 | XPFit Plus LC Connector SM: PC 900µm/250µm 120pack*             | Blue    | White      |
| 951-291-411 | XPFit Plus LC Connector MM: 50/125 900µm/250µm 120pack*         | Black   | White      |
| 951-391-211 | XPFit Plus LC Connector MM : 62.5/125 900µm/250µm 120pack*      | Beige   | White      |
| 951-491-511 | XPFit Plus LC Connector MM: 50/125 10G OM3 900µm/250µm 120pack* | Aqua    | White      |

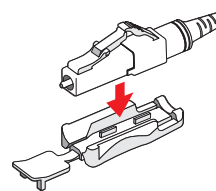
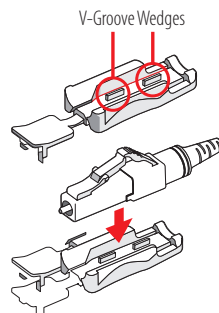
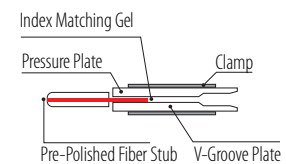
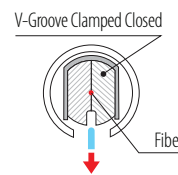
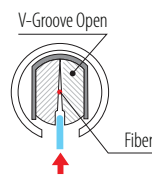
951-191-111 ORDER CODE example

**Note:** The connector performance specifications include an internal mechanical splice

**Note\*:** 1. 12 pack available. Add -12 to existing part number  
2. Typical specification values are at 23°C ±5°C

### Features:

- Mechanical Splice (*index matching gel*)
- Highly Stable & Reliable
- Perfect Performance
- Compact Package
- RoHS Compliant
- Finished Connector meets UL94-V0 Flammability Rated
- TIA/EIA 568-C.3 Compliant



XP Fit Plus LC Field Installable Connector

# XP FIT PLUS TERMINATION KIT

The Connector Installation Tool Kit contains everything needed for installation of the SC and LC XP FIT PLUS connectors. No epoxy,

polishing film, or other consumables are required, and there is no need to plug into electrical outlets, allowing installers to get in and out of installation sites quickly.



**Easy installation**  
**in under 2 minutes**



Premium Cleaver Flat



Standard Cleaver Flat



Precision Cleaver Angled

**Features:**

- Fast installation to Minimize onsite labour costs
- Compatible with conventional LC & SC connectors and adapters
- Easy operation
- Quick assembly in under 2 minutes
- No adhesive or polishing required
- Compact tool without electric power

# XP FIT PLUS CONNECTOR TOOLS

The XP Fit Plus Connectors are supplied in conjunction with specific tools for easy termination in the field.

| TYPE       | ITEM NUMBER   |
|------------|---------------|
| LC version | XPFLCB-900-FH |
| SC version | XPFSCB-900-FH |

XPFSCB-900-FH ORDER CODE example

| ORDER CODE | DESCRIPTION  |
|------------|--|
| XPFP-F     | XP Fit Field Installation Kit with Flat Cleaver - Premium  |
| XPFS-F     | XP Fit Field Installation Kit with Flat Cleaver - Standard |
| XPFP-A     | XP Fit Field Installation Kit with Angled Cleaver          |

| Content for XP Fit Field Installation Kit with Flat Cleaver - Premium - XPFP-F | SENKO PN      |
|--|---------------|
| Jacket and 250µm Fiber Stripper + 125µm Buffer Remover                         | AFT-T-223-S   |
| Thermal Buffer Removal Tool  | AFT-T-TBR     |
| Replacement Blade Set  | AFT-T-TBR-R   |
| Precision Cleave Tool (Flat) - Premium   | AFT-T-CL-SMT  |
| Lint Free Dry Wipes  | AFT-A-KW      |
| Fiber Optic Cleaning Pen   | AFT-A-EWP     |
| Kevlar Scissors  | AFT-T-KS      |
| Fiber Disposal Unit  | AFT-A-FU      |
| Fine Permanent Marker Pen  | AFT-A-PMB     |
| Fiber Checker  | AFT-G-FC      |
| 2.5mm to 1.25mm Adapter  | AFT-G-CAC     |
| Launch Cables  | XPFT-TEST-KIT |
| Soft Case  | AFT-A-CS-XP   |

| Content for XP Fit Field Installation Kit with Flat Cleaver- Standard - XPFS-F | SENKO PN    |
|--|-------------|
| Precision Cleave Tool (Flat) - Standard  | AFT-T-CL-01 |

**Note:** The contents of this Kit are the same as the XPFP-F, with substitution of Standard Precision Flat Cleaver

| Content for XP Fit Field Installation Kit with Angled Cleaver - XPFP-A | SENKO PN  |
|--|-----------|
| Precision Cleave Tool (Angled)   | SE-AFC-08 |

**Note:** The contents of this Kit are the same as the XPFP-F, with substitution of Precision Angled Cleaver

