

MINI IP-SERIES

Introducing the SENKO MINI-IP SERIES, a cost effective solution for outdoor connection



Weather Proof
outdoor rated



Simple bayonet
locking system



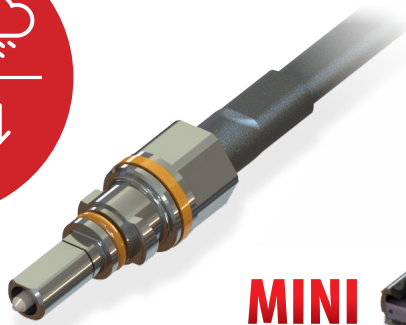
Low
Insertion Loss



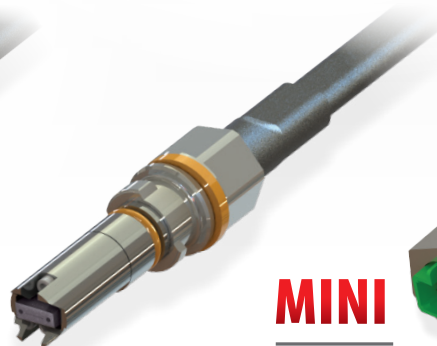
Mini size
Reduced 50%



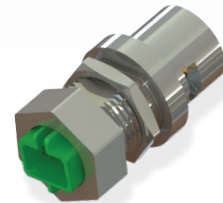
MINI
IP-SC



MINI
IP-MPO



MINI
IP-SC Adaptor



FEATURES

- Small OD connector: 14mm for duct installation
- IP water immersion and dust protection for harsh environment
- -40/+75
- Compatible for various drop cable
- Chemical Resistance
- Simple "one action" bayonet mating
- Durable 100lbs pull force
- Patent design

APPLICATIONS

- FTTH
- FTTA
- Broadcast
- Military
- Oil and Gas
- Transport
- Renewable Energy

CHARACTERISTICS	SC		MPO LOW LOSS		STANDARD MPO	
For MINI-IP	SM	SC APC	SM (Low Loss)	MM (Low Loss)	SM	MM
Insertion Loss (MAX)	0.20dB	0.20dB	0.35dB	0.30dB	0.70dB	0.50dB
Insertion Loss (Average)	0.08dB	0.10dB	0.10dB	0.08dB	0.20dB	0.10dB
Return Loss	55dB	65dB	60dB Angle)	25dB (Flat)	60dB Angle)	25dB (Flat)
Operating Temperature	-40 / +75					
IP Ratings	IP-68					
Pull Force	100lbs (Straight)					
Material	UV/Chemical Resistant					
Coupling	Bayonet style					

Note: SENKO SC connectors are designed and tested to meet IEC Random Mating Grade B ($\leq 0.12\text{dB}$ mean, $\leq 0.25\text{dB}$ max for $>97\%$ of sample
Mini IP-MPO is available up to 24 Fibers

IP-J Connector

IP-J CONNECTOR

The Direct Connect IP-J is essentially an IP-67 outdoor connectivity system (connector & bulkhead) with grounded EMI Shielding for MSA compliant SFP and SFP+ pluggable transceivers. This connection method allows quick and easy replacement of the active components thus allowing seamless re-configuration for any future upgrade.

Currently, available in both Single Mode and/or Multimode fibers, the IP-J can be provided with two fiber duplex or single fiber simplex connectivity. The field installable version can be installed over an existing outdoor simplex or duplex LC assembly for applications requiring on-site or local assembly manufacturing.



Weather Proof outdoor rated



Simple bayonet locking system



Low Insertion Loss



SFP Direct

- FEATURES**
- IP-67 Water and Dust protection
 - -40/+75 wide operation temperature
 - Accept any MSA compliant SFP or SFP+
 - Direct Connect interface
 - No tool one action installation
 - Bayonet style interface

- APPLICATIONS**
- FTTH
 - FTTA
 - Broadcast
 - Military
 - Oil and Gas
 - Transport
 - Renewable Energy



Pullable Dust Cap

IP-J Receptacle Adaptor

CHARACTERISTICS		
For IP-J (Duplex)	SM	MM
Insertion Loss (MAX)	0.20dB	0.20dB
Insertion Loss (Average)	0.08dB	0.10dB
Return Loss	55dB	NA
Durability	100 mating	
Operating Temperature	-40 / +75	
IP Ratings	IP-67	
Pull Force	60lbs (Straight)	
Material	UV Resistant	

Note: SENKO LC connectors are designed and tested to meet IEC Random Mating Grade B (≤0.12dB mean, ≤0.25dB max for >97% of sample)

SENKO ADVANCED COMPONENTS, INC.

CALL 1-888-32-SENKO

America
USA EAST 1-888-32-SENKO
USA WEST 1-858-623-3300
TEXAS 1-972-661-9080
Sales-Americas@senko.com

South America
BRAZIL +55-21-3736-7065
Sales-Brazil@senko.com

Asia
HONG KONG +852-2121-0516
SHANGHAI +86-21-5830-4513
SHENZHEN +86-755-22699838
Sales-Asia@senko.com

Europe
UK +44 (0) 118 982 1600
ITALY +39 011 839 98 28
POLAND + 48 71 396 36 59
Sales-Europe@senko.com

Asia Pacific
AUSTRALIA +61 (0) 3 9755-7922
Sales-Asia-Pacific@senko.com
Middle East North Africa
DUBAI +971 4 8865160
Sales-MENA@senko.com

Japan
TOKYO +81 (0) 3 5825-0911
Sales-Japan@senko.com