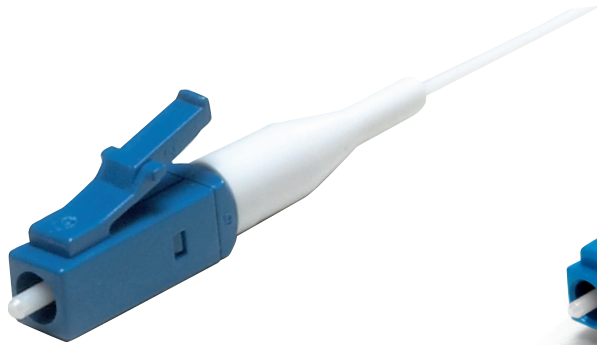
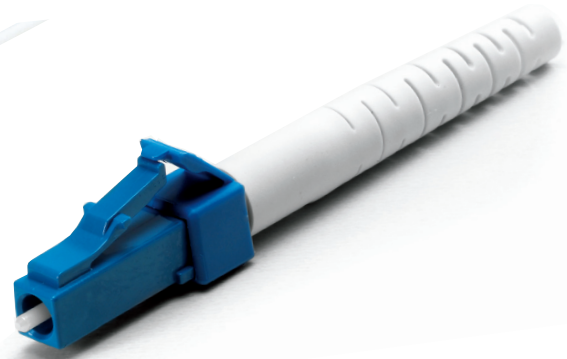


LC LOW LOSS CONNECTOR



LC UPC 900 μ m



LC UPC 2mm

Testing Method	IL		RL		Test Standard
	Maximum (dB)	Typical (dB)	Minimum (dB)		
To Master Code	0.1	0.04	55		IEC 61300-3-4
Random Mating	0.15	0.05	55		IEC 61300-3-34

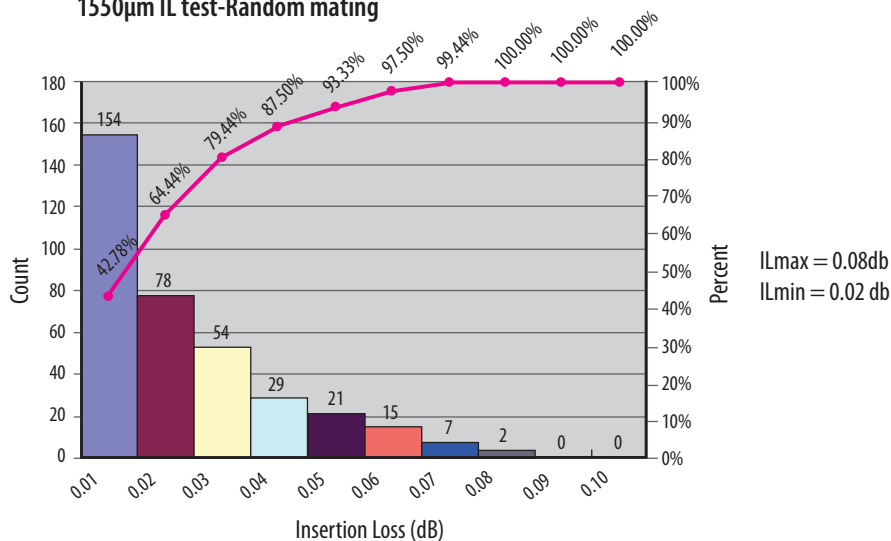
Features

- ▶ Insertion Loss 0.03dB
(mated with master connection)
- ▶ Insertion Loss 0.05dB
(mated with random connection)

Applications

- ▶ Long distance Transfer System
- ▶ High Power System

1550 μ m IL test-Random mating

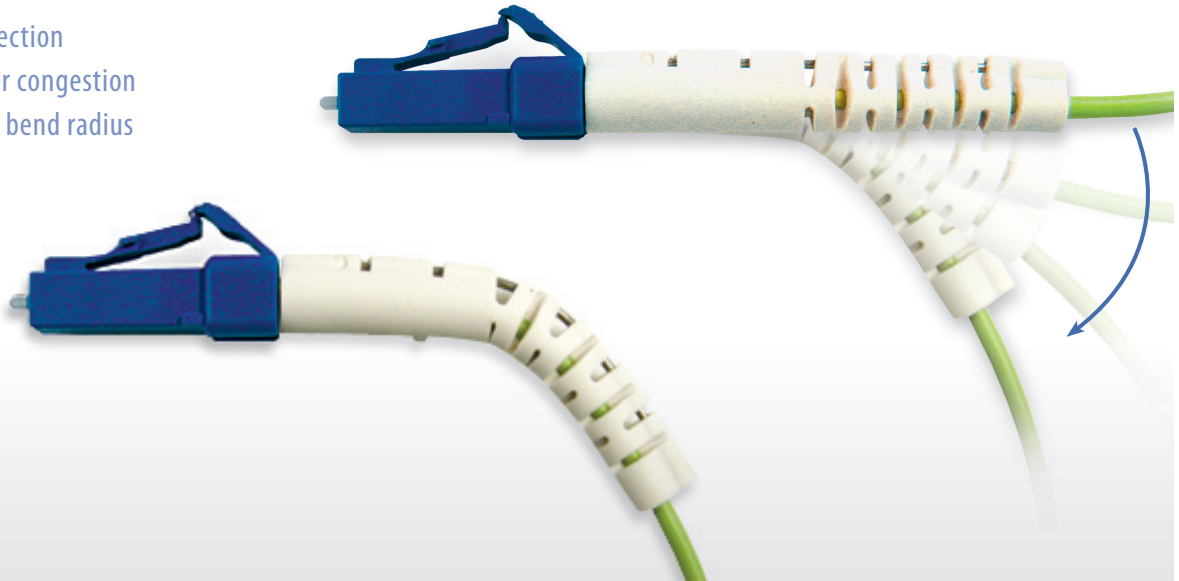


FLEX-ANGLE BOOT

0° TO 90° LC BENDABLE BOOT

Features

- ▶ Flexible in any direction
- ▶ Helps prevent fiber congestion
- ▶ Controls force and bend radius



Flex-Angle LC 2mm Boot

SENKO's **Flex-Angled boot** is solving the congestion problems that naturally occur when hundreds of fibers terminate at one small patch panel. The **Flex-Angled boot** is designed so that installers and technicians can pre-bend the boot into any desirable angle needed to perfectly dress the fibers, even in high density environments.

High density patch panels can be tricky to maneuver around when it is fully populated with rigid 90 boots, and the boots can interfere with a technician's access to the panel. SENKO's **Flex-Angle boot** allows bending in any direction and freedom of movement around other connectors. Also, removing a jumper is made easy; simply straighten out the boot and remove it without worrying about it affecting other connectors in the panel.

SENKO's **Flex-angle boot** controls the force and bend radius enough to survive stress tests without significantly increasing insertion loss as described in Telcordia's GR-326 testing requirements.

SENKO ADVANCED COMPONENTS, INC.

Americas

USA EAST 1-888-32-SENKO
USA WEST 1-858-623-3300
Sales-Americas@senko.com

Asia

HONG KONG +852-2121-0516
SHANGHAI +86-21-5830-4513
SHENZHEN +86-755-2533-4893
WUHAN +86-27-8725-9057
Sales-Asia@senko.com

Europe

UK +44 (0) 118 982 1600
ITALY +39 011 839 9828
POLAND +48 71 79 88 152
Sales-Europe@senko.com

Asia Pacific

AUSTRALIA +61 (0) 3 9755-7922
Sales-Asia-Pacific@senko.com

Middle East North Africa

P.O. Box # 262381, Jebel Ali, Dubai, U.A.E.
Sales-MENA@senko.com

WWW.SENKO.COM

Japan

TOKYO +81 (0) 3 3262-0211
Sales-Japan@senko.com