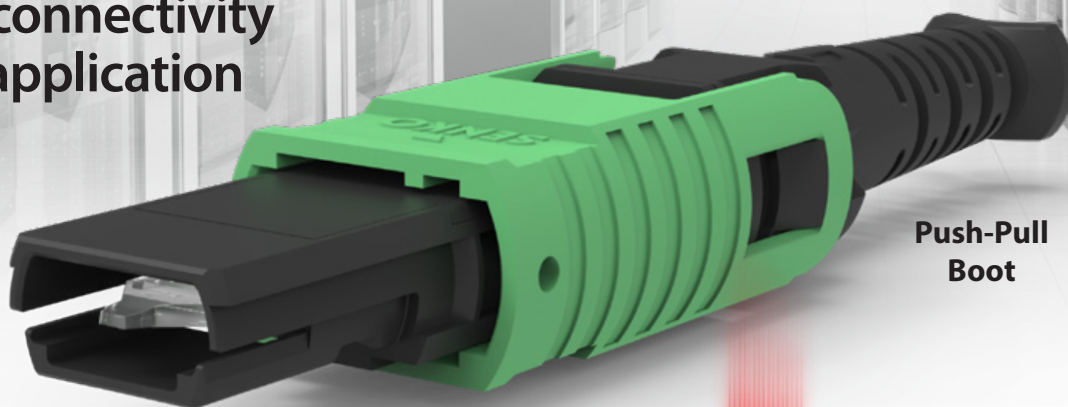


MPO **EBO EZ-WAY™**

EXPANDED BEAM

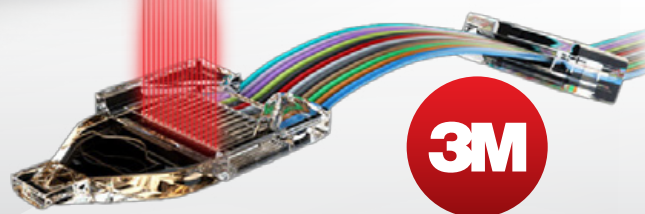
Precision connectivity
for every application

Low
Spring Force



Push-Pull
Boot

SENKO's MPO EBO EZ-WAY™ connector incorporates the EZ-WAY™ push-pull boot feature for high density applications coupled with the non-contact, lensed 3M™ Expanded Beam Optical ferrule allowing it to be deployed in environments not always suited to the traditional physical contact products.



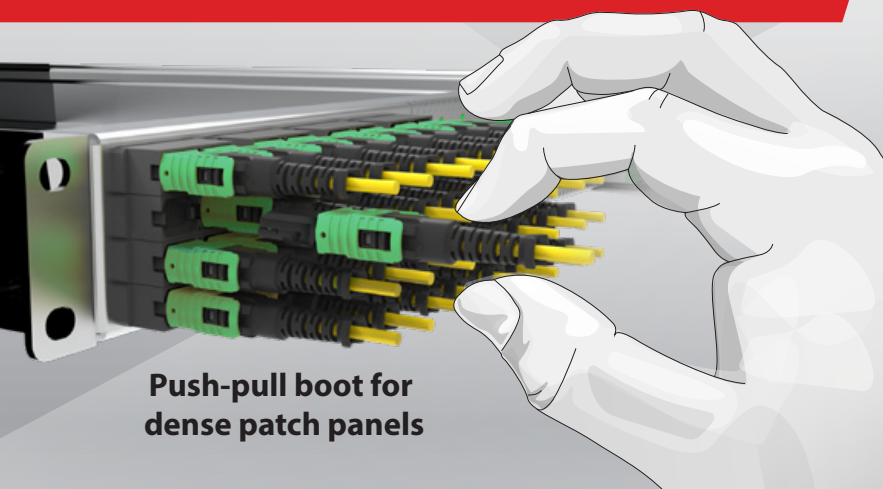
3M

Integrating 3M Revolutionary EBO Ferrule Technology

FEATURES

- SENKO's push-pull boot suitable for high density applications
- Resistant to dirt, debris, and vibration damage
- Compatible with standard MPO Adapters and SENKO 776 series of MPO SC Footprint adapters
- Designed in collaboration with Molex for interoperability and intermateability
- Non-contact, lensed 3M™ Expanded Beam Optical ferrule

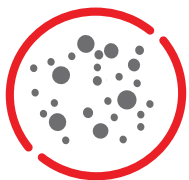
Push-pull boot for
dense patch panels



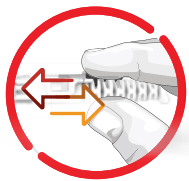
MPO EBO EZ-WAY™ CONNECTOR

EXPANDED BEAM PRECISION

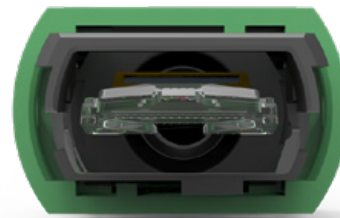
The non-contact ferrule ensures it is more resistant to dirt, debris, and damage from vibration, thus ensuring stable and reliable connections over time for optimal network performance. It is also compatible with standard MPO Adapters and the SENKO 776 series of MPO SC Footprint adapters, making it suitable for use in legacy applications and panel designs.



**Dust
Insensitivity**



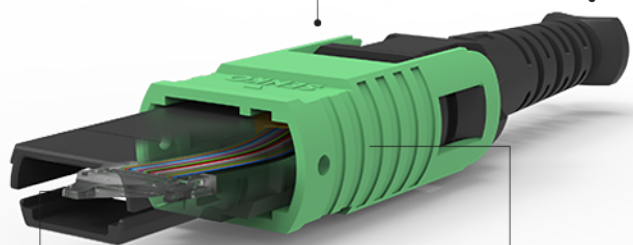
Push-pull boot



**Fits standard
MPO adapters**

**MPO Push-Pull
Latching Mechanism**

**EZ-WAY
Push-Pull Boot
For High-density
Applications**



**3M Expanded Beam
Optical Ferrule**
for Single-mode and
Multimode Applications

Compact Size
Suitable for
Belly-to-belly
Applications

Specifications

	Singlemode	Multimode
Durability	1000 mating cycles	
Insertion Loss (dB)*	<0.70	<0.30
Typical Return Loss (dB)*	≥55	≥25
Operating Temperature	-10°C to +60°C	

Based on master grade jumper to low loss random mating test