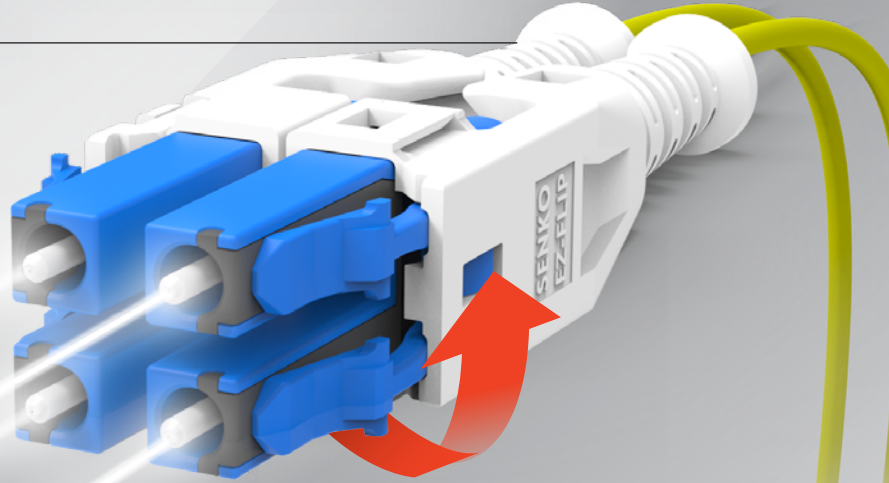




LC *EZ-WAY*®

Tailored for Dual
800G Transceivers

800G
1.6TB



EZ-FLIP

DUAL LC
(LR4/FR4)

Dual Duplex LC



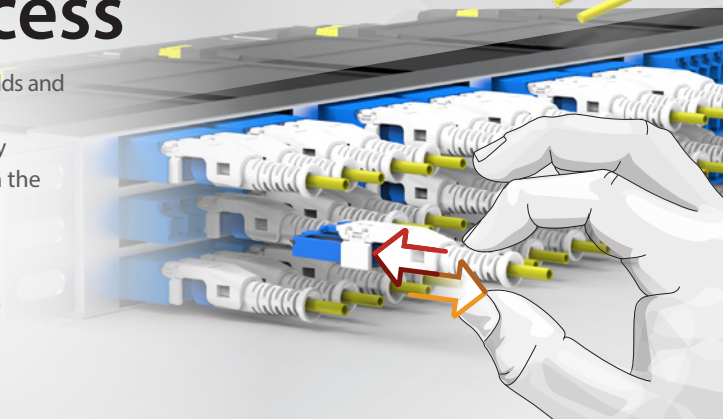
Many LC connectors on the market are too bulky for dual-interface transceivers. SENKO has engineered dual LC connectors designed to match the precise QSFP-DD footprint with a “belly to belly” configuration. The user-friendly push-pull tab at the rear, streamlines connector insertion and removal within these confined spaces.



QSFP-DD

EZ Access

- Seamless Moves, Adds and Changes (MACs)
 - Push-pull simplicity
- Easy access even in the densest of panels



FEATURES

- Compatible with dual LC transceivers
- Industry leading typical IL of 0.12dB
- User-friendly push-pull boot
- Reduced footprint for perfect fit
- Designed for “belly to belly” configurations

High Density Patch Panels