

SMA 905 **CONNECTOR AND ADAPTER** **Series 211 / 212**



The SENKO SMA Fiber Optic Connector is a robust and versatile solution widely used in medical, industrial, and military applications. It features a non-contact design and a threaded coupling mechanism, ensuring secure and reliable connections. The connector accommodates a wide range of ferrule inner diameters, making it suitable for larger ID specialty fibers. Additionally, it operates efficiently across a broad temperature range from -40°C to +85°C, and its rugged stainless steel ferrule enhances durability. This makes the SENKO SMA connector an excellent choice for environments requiring high performance and reliability.

FEATURES

- Hex nut threaded locking mechanism
- Excellent heat dissipation
- Wide variety of fiber sizes
- Metallic ferrule
- Threaded adapter
- Non contact ferrule

APPLICATIONS

- Medical
- Industrial
- Sensing
- Government and defense

KEY BENEFITS

- ✓ **UL rated boots**
- ✓ **Rugged stainless steel ferrule**
- ✓ **Threaded coupling mechanism**

Mechanical Data

	Value
Durability	500 matings
Fiber Count	Simplex (1 Fiber)
Cable Suitability	3 mm
Ferrule Material	Stainless Steel

Optical Data

	Singlemode	Multimode
	UPC	MM
	Standard	
Typical Insertion Loss (dB)	0.2	0.25
Max Insertion Loss (dB)	0.3	0.3
Ferrule Diameter (µm)	125.5 µm	127 µm

Environmental Data

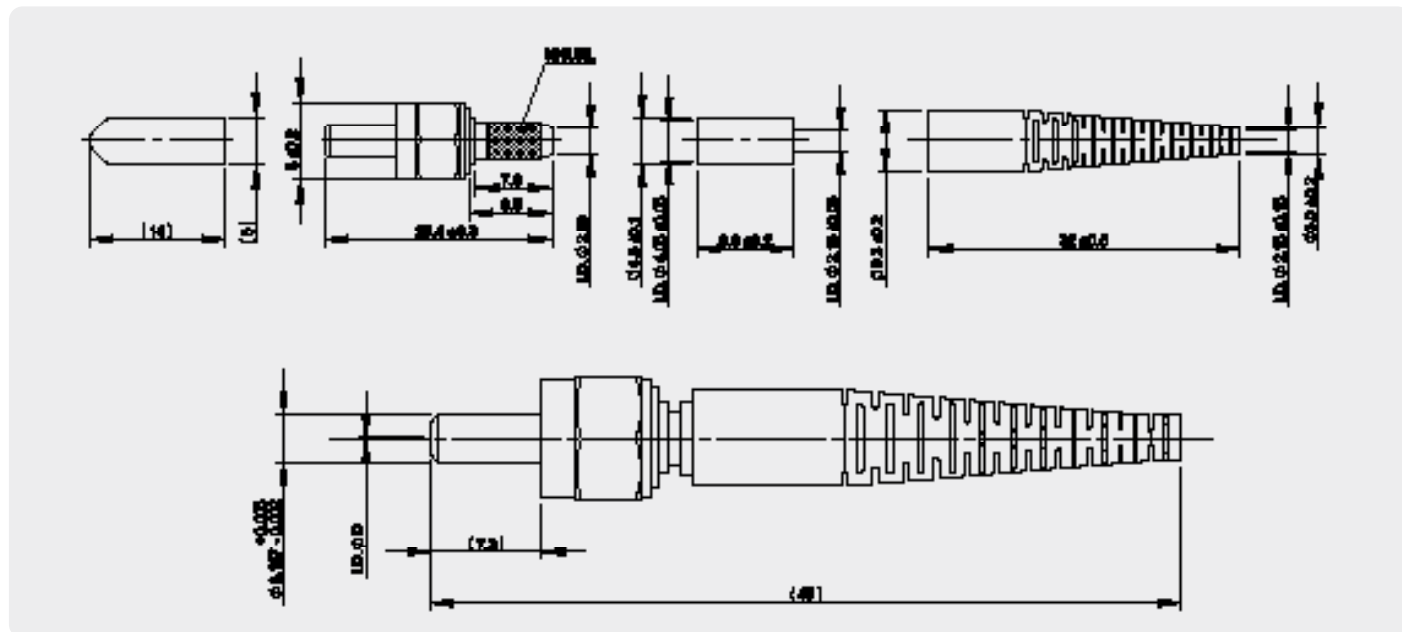
	Value
Operating Temperature	-40°C to +85°C
RoHS Compliance	Yes
REACH Compliance	Yes

SMA 905 CONNECTOR AND ADAPTER

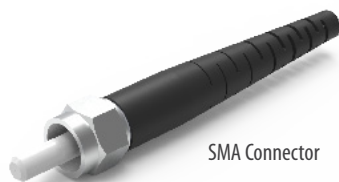
Series 211 / 212

SMA 905 CONNECTOR AND ADAPTER DATASHEET

Connector Drawing



ORDERING



SMA Connector

CONNECTOR CODE		FERRULE TYPE				BOOT TYPE		BOOT COLOR	
211	SMA with Hex Nut	201	MM: 127μm	205	MM: 250μm	P	Standard 3.0mm	1	Blue
		202	MM: 230μm	206	MM: 360μm			2	Black
		203	MM: 144μm	207	MM: 460μm				
		204	MM: 245μm	208	MM: 240μm				

211 - 201 - P2 ORDER CODE example



SMA Adapter

ADAPTER CODE		ADAPTER TYPE	
212	SMA Adapter	101	SMA Adapter

212 - 101 ORDER CODE example

SENKO[®]

Advanced Components

sales@senko.com
1-858-623-3300

senko.com/contact