

# Waterproof LC

Unmatched  
Performance in Any  
Environment



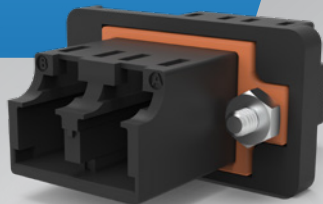
SENKO's waterproof LC connector employs cutting-edge sealing technology, transforming an IEC-standardized LC interface into a robust IP68 outdoor connector. Despite its compact and user-friendly design, this connector offers the same high level of water resistance as larger and bulkier alternatives. Its small footprint makes it an ideal selection for discreet and space-conscious outdoor enclosures.



## Applications

- Outdoor wireless networks
- Fiber-to-the-Home (FTTH) installations
- Industrial automation

## Cutting-edge Sealing Technology



Increased patch panel density reduces the number of racks required to support the network.

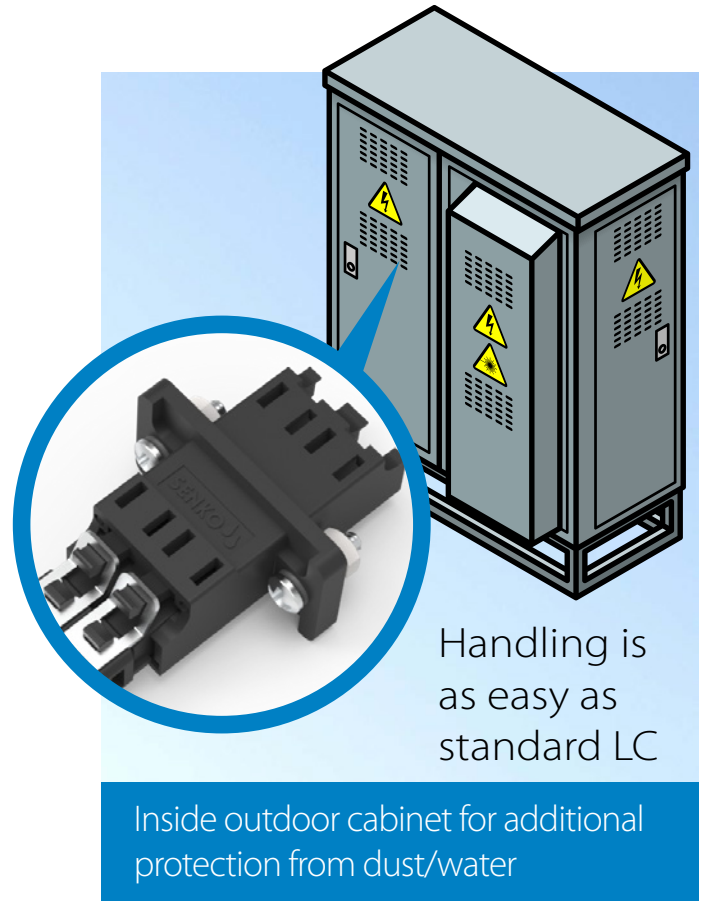
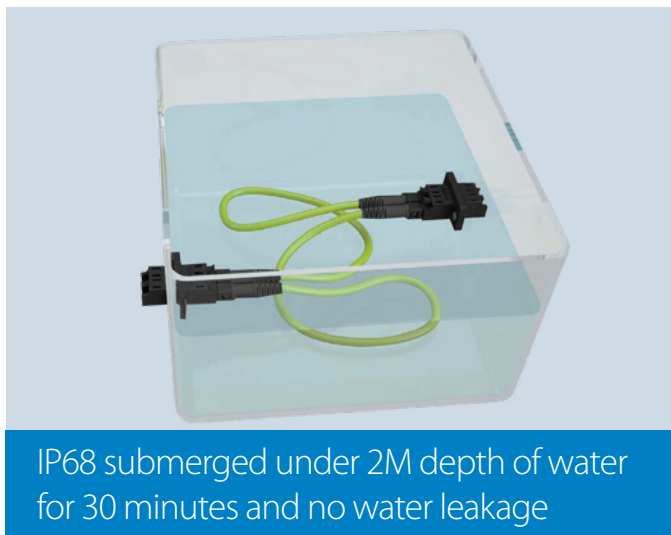
### FEATURES

- Waterproof to IP68
- Innovative sealing technology
- Intermateable with IEC LC interface
- Much smaller than bulky outdoor connectors
- Compact and discreet for outdoor closures
- Higher protection in street-side cabinets
- Reduced contamination impact

## Waterproof LC

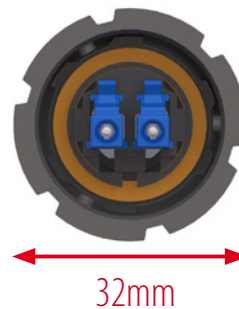
### Small Cell Site

Make Outdoor  
Module Smaller



### Size Comparison

Conventional Industrial  
LC Connector



Waterproof  
LC Connector

