

Inspection Probes

for Connector Endface Visualization



Sumix designs and manufactures handheld microscope probes for endface inspection of single and multi-fiber connectors. The probes can be used to inspect and verify both the patch cord and bulkhead sides of fiber interconnect, of both PC and APC types.

Three models are available: SMX-Scopio (digital), SMX-Scopio-B (digital, with the external test button) and SMX-Scopio-A (analog).

Features and Benefits

Purpose built high-quality optics

See defects as small as 0.5 μ m - high quality measurements in the field.

Long barrel and flat housing

Easily inspect connectors in dense patch panels and hard to reach equipment or vehicles. Flat housing also prevents the probe slipping off the work surface.

"Finger-friendly" focusing system

Focus fast, focus sure. More measurements – less time.

Robust design (aluminum body, stainless steel barrel)

If it drops – do not worry. No plastic to break. One year warranty included.

Test button (SMX-Scopio-B version)

Inspect connectors at the push of a button. Fewer movements – less time.

Wide variety of tips

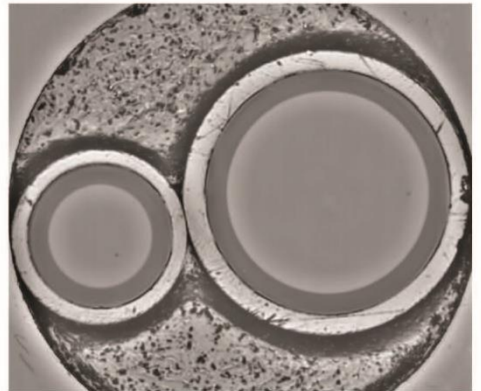
Inspect single and multi-fiber connectors, both genders of PC and APC termini.

New SMX-LightSpeed™ software with user-friendly interface (available with SMX-Scopio and SMX-Scopio-B)

Is your connector good? Let the software decide and document results. Eliminate user subjectivity. Use preinstalled Pass/Fail criteria based on IEC standards or create your own limits.

Portable 3.5" TFT Display (available with SMX-Scopio-A)

No external power source is needed, just connect directly to the charged portable 3.5" TFT display via the mini jack.



Two fiber SMA connector endface (SMX-Scopio)



Segment of MT12 connector endface (SMX-Scopio)

	SMX-Scopio and SMX-Scopio-B*	SMX-Scopio-A
Field of view:	d = 0.4 mm	d = 0.4 mm
Defect size detection:	0.5 μ m	1 μ m
Optical resolution:	2 μ m	2 μ m
Magnification:	600x (variable)	200x
Light source:	blue LED, 470 nm	blue LED, 470 nm
Camera type:	digital	analog
Sensor type:	monochrome, 1280 \times 1024, 1/2" CMOS	monochrome, 1/3" Sony CCD
Live image:	800 \times 800, 28 fps default 1280 \times 1024, 14 fps full resolution	320 \times 240 full resolution
Power source:	USB 2.0/3.0 Port of PC	internal battery of 3.5" TFT display
Cable connector:	USB 2.0	mini jack

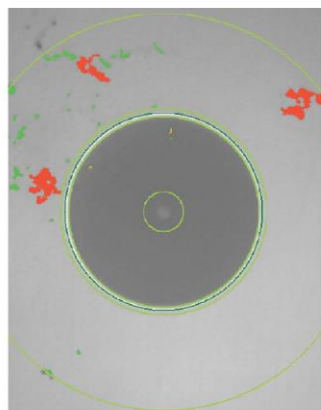
Physical

Dimensions (H×W×L):	56.3 × 25 × 201 mm (2.22 × 0.98 × 7.91 inches)	56.3 × 25 × 201 mm (2.22 × 0.98 × 7.91 inches)
Weight:	330 g (0.73 lbs)	330 g (0.73 lbs)
Housing material:	aluminum	aluminum
Barrel material:	stainless steel	stainless steel

Applications

Optimal for connectors:	industrial, telecommunication	industrial, telecommunication
Used with:	desktop PC, laptop	3.5" TFT display, other analog displays (custom order)

* version with the test button



VISUAL INSPECTION SINGLE FIBER REPORT

Test Name:	25
Test ID:	25
Preset:	IEC PC 5M RL 45 dB
Device:	SIMX-Scopio
Hardware ID:	4022
SIMX-Scopio	
Inspection:	2.1.55.1977
Operator:	Operator1

FAIL

Inspection Summary

Zone	Diameter (µm)		Type	Criterion	Anomalies			
	Inner	Outer			Size Range	Result	Count	Allowed
A	0	25	Scratch	Width	>0	PASS	0	0
			Defect	Encompassing Circle Diameter	>0	PASS	0	0
B	25	120	Scratch	Width	>3	PASS	0	5
			Defect	Encompassing Circle Diameter	2-5	PASS	2	5
			Defect	Encompassing Circle Diameter	>5	PASS	0	0
C	120	130						
D	130	250	Defect	Encompassing Circle Diameter	>10	FAIL	3	0



For more information or get a demo unit, contact your local Senko sales person or email us at sales@senko.com.