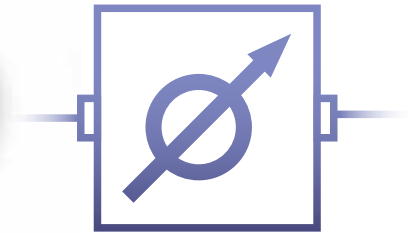
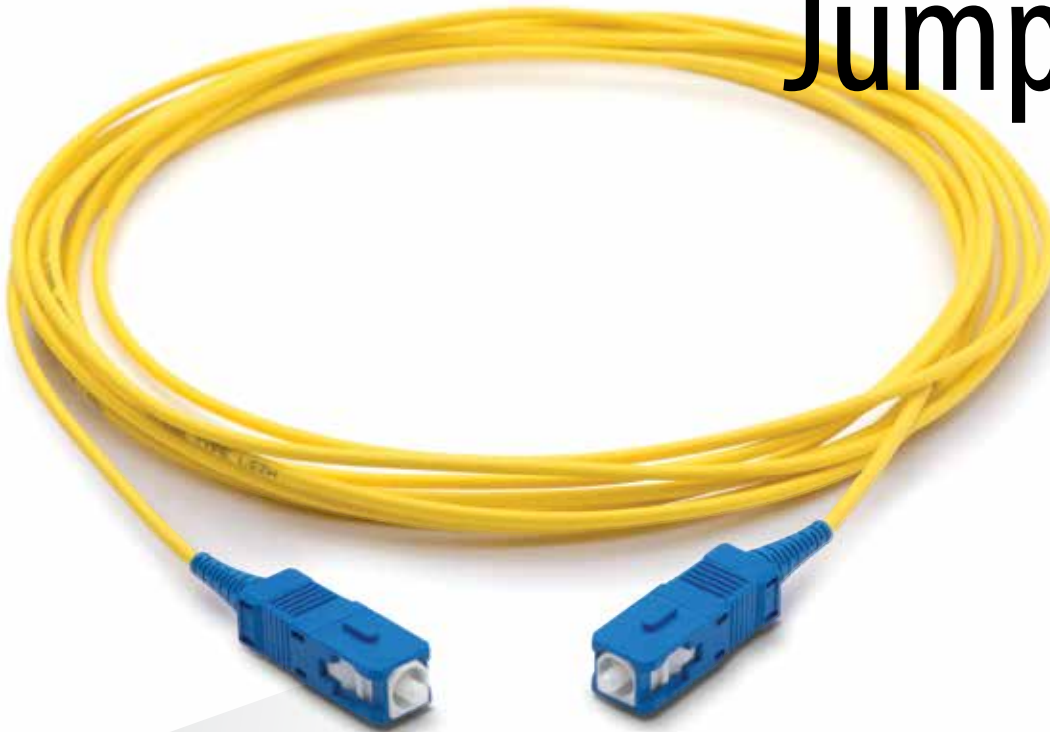


# IN-LINE ATTENUATOR

## Jumper Style



### APPLICATIONS

- Carrier Networks
- Head Ends
- Private Networks
- Data Centers
- Equipment Test Areas
- Cross-Connect Applications
- Transmission Systems
- Storage Systems
- Switching Systems
- DWDM Systems
- Equipment Distribution Areas

The Senko in-line optical attenuator is integrated into a standard connectorized fiber optic jumper cable.

ITEM	SPEC	NOTE
Attenuation (db)	1 to 10±1 11 to 25±10%	tested at 1310nm and 1550nm
Return Loss(db)	>55(UPC) >65 (APC)	



### No Bulge

No protected fiber splice area on the cable (It looks like a standard jumper)



### Construction

- All Fiber Construction (no air gap utilized)
- Telcordia Compliant for Endface Geometry and mechanical strength
- Environmentally Stable



### Attenuation

- Fixed Attenuation Values from 1 to 25dB
- For full wavelength type (1270-1650nm)



### Easy handling

as it works as a jumper. Compared to adding the FIXED attenuator to a normal jumper overall length will become shorter and will be more stable as a product