

# Inspection Probes

for Connector Endface Visualization



Sumix designs and manufactures handheld microscope probes for endface inspection of single and multi-fiber connectors. The probes can be used to inspect and verify both the patch cord and bulkhead sides of fiber interconnect, of both PC and APC types.

Three models are available: SMX-Scopio (digital), SMX-Scopio-B (digital, with the external test button) and SMX-Scopio-A (analog).

## Features and Benefits

### **Purpose built high-quality optics**

See defects as small as 0.5 $\mu$ m - high quality measurements in the field.

### **Long barrel and flat housing**

Easily inspect connectors in dense patch panels and hard to reach equipment or vehicles. Flat housing also prevents the probe slipping off the work surface.

### **"Finger-friendly" focusing system**

Focus fast, focus sure. More measurements - less time.

### **Robust design (aluminum body, stainless steel barrel)**

If it drops - do not worry. No plastic to break. One year warranty included.

### **Test button (SMX-Scopio-B version)**

Inspect connectors at the push of a button. Fewer movements - less time.

### **Wide variety of tips**

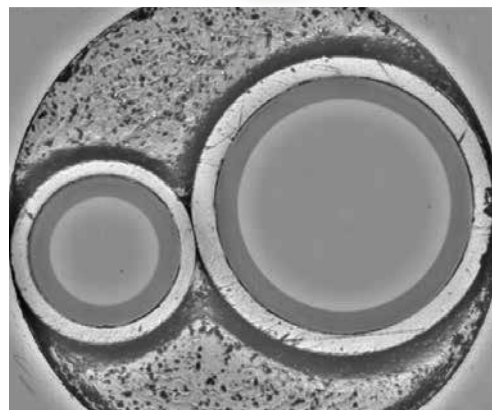
Inspect single and multi-fiber connectors, both genders of PC and APC termini.

### **New SMX-LighSpeed™ software with user-friendly interface (available with SMX-Scopio and SMX-Scopio-B)**

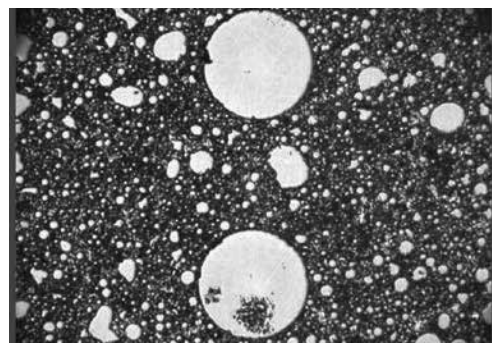
Is your connector good? Let the software decide and document results. Eliminate user subjectivity. User preinstalled Pass/Fail criteria based on IEC standards or create your own limits.

### **Portable 3.5" TFT Display (available with SMX-Scopio-A)**

No external power source is needed, just connect directly to the charged portable 3.5" TFT display via the mini jack.



Two fiber SMA connector endface (SMX-Scopio)



Segment of MT12 connector endface (SMX-Scopio)

# Specifications

	SMX-Scopio and SMX-Scopio-B*	SMX-Scopio-A
Field of view:	d = 0.4 mm	d = 0.4 mm
Defect size detection:	0.5 μm	1 μm
Optical resolution:	2 μm	2 μm
Magnification:	600× (variable)	200×
Light source:	blue LED, 470 nm	blue LED, 470 nm
Camera type:	digital	analog
Sensor type:	monochrome, 1280 × 1024, 1/2" CMOS	monochrome, 1/3" Sony CCD
Live image:	800 × 800, 28 fps default 1280 × 1024, 14 fps full resolution	320 × 240 full resolution
Power source:	USB 2.0/3.0 Port of PC	internal battery of 3.5" TFT display
Cable connector:	USB 2.0	mini jack
<b>Physical</b>		
Dimensions (H×W×L):	56.3 × 25 × 201 mm (2.22 × 0.98 × 7.91 inches)	56.3 × 25 × 201 mm (2.22 × 0.98 × 7.91 inches)
Weight:	330 g (0.73 lbs)	330 g (0.73 lbs)
Housing material:	aluminum	aluminum
Barrel material:	stainless steel	stainless steel
<b>Applications</b>		
Optimal for connectors:	industrial, telecommunication	industrial, telecommunication
Used with:	desktop PC, laptop	3.5" TFT display, other analog displays (custom order)

\* version with the test button



## VISUAL INSPECTION SINGLE FIBER REPORT

Test Name:	25								
Test ID:	25								
Part#::	IEC PC15A70L45-JB								
Device:	SMX-Scopio								
Insufflance ID:	9022								
SNAN Scopio	2.1.55.1877								
Inspection:	Operator:								
Operator:									
<b>Inspection Summary</b>									
Zone	Diameter (μm)		Type	Criteria	Anomalies				
	Inner	Outer			Size Range	Result	Count	Allowed	
A	0	25	Scratch	Width	<4	PASS	2	0	
B	25	120	Scratch	Width	<3	PASS	3	5	
				Defect	Incomparing Circle Diameter	<2.5	PASS	2	5
				Defect	Incomparing Circle Diameter	<5	PASS	3	0
C	120	120							
D	120	250	Defect	Incomparing Circle Diameter	>10	FAIL	1	0	



## SENKO ADVANCED COMPONENTS, INC.

### America

USA EAST 1-888-32-SENKO  
USA WEST 1-858-623-3300  
TEXAS 1-972-661-9080  
Sales-Americas@senko.com

### South America

BRAZIL +55-21-3736-7065  
Sales-Brazil@senko.com

### Asia

HONG KONG +852-2121-0516  
SHANGHAI +86-21-5830-4513  
SHENZHEN +86-755-2533-4893  
Sales-Asia@senko.com

### Europe

FRANCE +44 7939364565  
Salesfrance@senko.com  
GERMANY +49(0)15117683072  
Sales-Germany@senko.com  
ITALY +39 338 8919089  
Sales-Italy@senko.com  
POLAND +44 (0) 7796444488  
Sales-Europe@senko.com

SPAIN & PORTUGAL +34 678042829  
Sales-Iberia@senko.com  
UK +44 (0) 1256 700880  
Sales-UK@senko.com  
OTHER +44(0) 1256 700880  
Sales-Europe@senko.com

### Asia Pacific

AUSTRALIA +61 (0) 3 9755-7922  
Sales-Asia-Pacific@senko.com

### Middle East North Africa

DUBAI +971 4 8865160  
Sales-MENA@senko.com

### Japan

TOKYO +81 (0) 3 5825-0911  
Sales-Japan@senko.com

**CALL 1-888-32-SENKO**