

Senko solutions  
reduce cable protrusion  
in panels

**LC Conventional Boot**

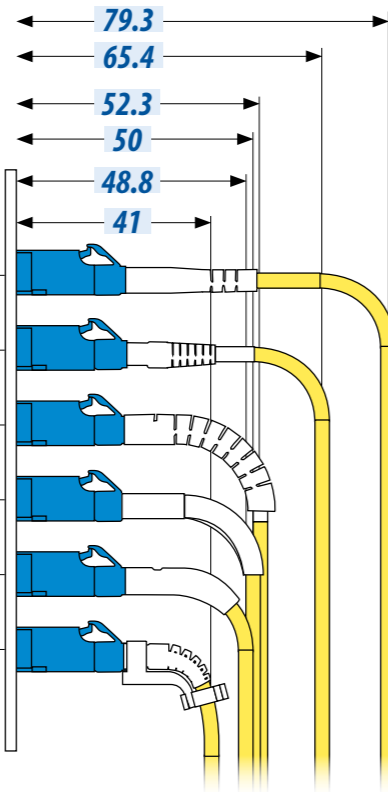
**LC MINI Boot**

**LC w/Flex-Angle Boot**

**LC w/90 Degree Boot**

**LC w/50 Degree Boot**

**LC +MINI Boot+Right Angle Clip**



High density patch panels can be tricky to maneuver around when they are fully populated with rigid 90° boots, and the boots can interfere with a technician's access to the panel. SENKO's Flex-Angle boot allows bending in any direction and freedom of movement around other connectors. Also, removing a jumper is made easy; simply straighten out the boot and remove it without worrying about it affecting other connectors in the panel.

**LC RELATED PRODUCTS**



**LC UNIBODY**  
Miniboot



**LC SWITCHABLE**  
Uniboot



**LC KEYED**  
Connector/Adapter



**LC XP FIT PLUS**  
No Epoxy, No Polishing  
Quick assembly  
in under 2 minutes



**LC TOP ADAPTER**  
True One Piece



**IP-LC CONNECTOR**  
Weatherproof  
Connector



Withstand  
the elements

**SENKO ADVANCED COMPONENTS, INC.**

**America**

USA EAST 1-888-32-SENKO  
USA WEST 1-858-623-3300  
TEXAS 1-972-661-9080  
Sales-Americas@senko.com

**Asia**

HONG KONG +852-2121-0516  
SHANGHAI +86-21-5830-4513  
SHENZHEN +86-755-2533-4893  
Sales-Asia@senko.com

**Europe**

FRANCE +44 7939364565  
Salesfrance@senko.com  
GERMANY +49(0)15117683072  
Sales-Germany@senko.com  
ITALY +39 338 8919089  
Sales-Italy@senko.com  
POLAND +44 (0) 7796444488  
Sales-Europe@senko.com

SPAIN & PORTUGAL +34 678042829  
Sales-Iberia@senko.com  
UK +44 (0) 1256 700880  
Sales-UK@senko.com  
OTHER +44(0) 1256 700880  
Sales-Europe@senko.com

**Asia Pacific**

AUSTRALIA +61 (0) 3 9755-7922  
Sales-Asia-Pacific@senko.com

**Middle East North Africa**

DUBAI +971 4 8865160  
Sales-MENA@senko.com

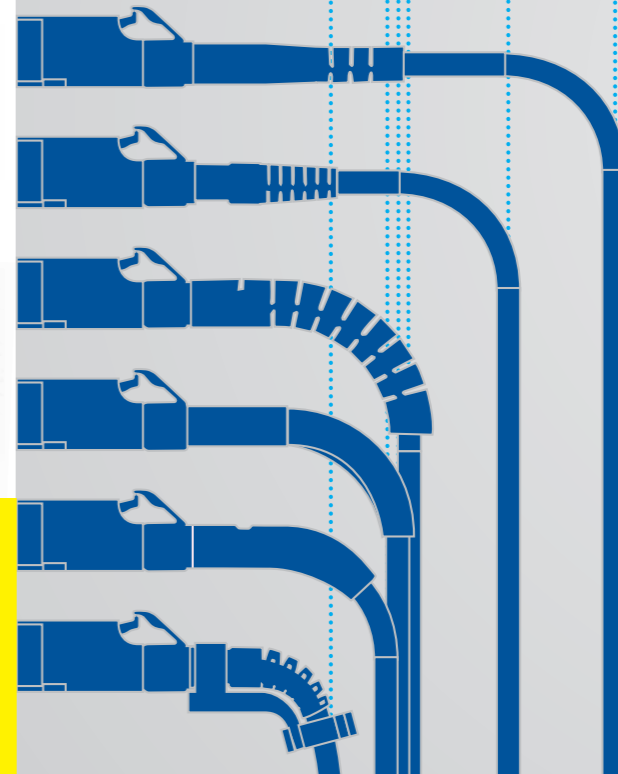
**South America**  
BRAZIL +55-21-3736-7065  
Sales-Brazil@senko.com

**Japan**

TOKYO +81 (0) 3 5825-0911  
Sales-Japan@senko.com

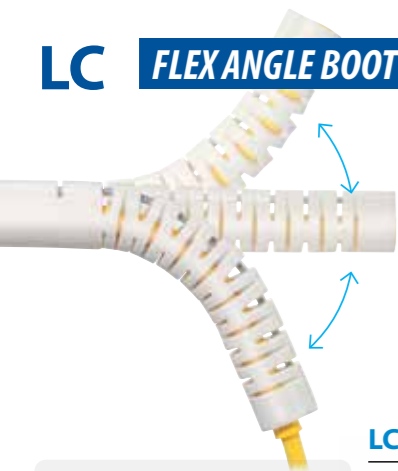
CALL 1-888-32-SENKO

www.senko.com



**SENKO**  
Advanced Components

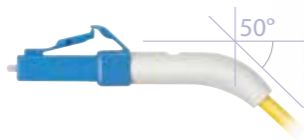
**Space  
Saving  
Measuring  
Tape**

**LC****FLEX ANGLE BOOT** 2mm Boot & 3mm Boot

The Flex-Angle boot is designed to bend to any angle or direction from straight to 90°

**LC UNIBODY****LC MINI BOOT****FEATURES**

- Flexible in any direction
- Helps/prevent fiber congestion
- Controls force and bend radius

**LC RIGHT ANGLE CLIP****LC 50° ANGLE BOOT****LC 90° BOOT**

 PATENT PENDING  
SENKO DESIGN
**LC-HD CONNECTOR**

The LC-HD SERIES is RoHS, Reach SVHC and UL 94 V-0 compliant.

A totally unique design which can increase panel density to its highest possible.

**FEATURES**

- Easy to release trigger connector
- Stackable adapters
- 60% Increase in density

**HIGH DENSITY RACK**

**10**  
PACK  
LC-HD  
SPACING

**60%**  
increase in  
density

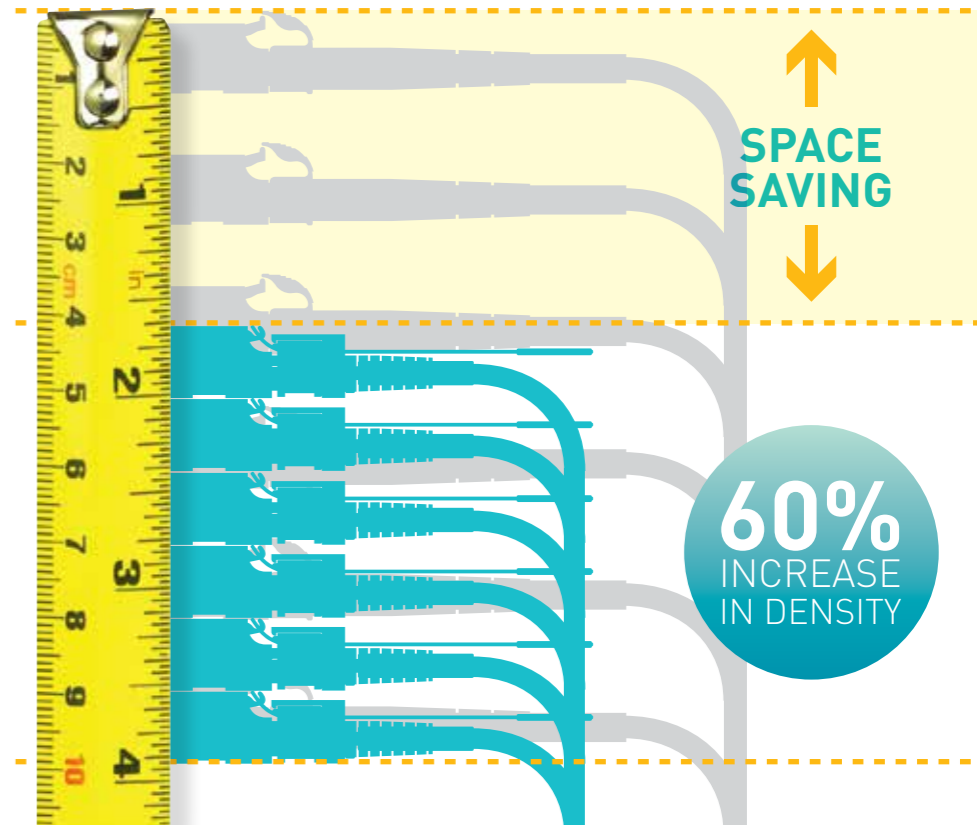
9.4 mm  
(0.37 in)

**CONVENTIONAL RACK**

**6**  
PACK  
SPACING

17.4 mm  
(0.69 in)



 PATENT PENDING  
SENKO DESIGN
**CONVENTIONAL Rack****VS****HIGH DENSITY Rack**

**60%**  
INCREASE  
IN DENSITY