

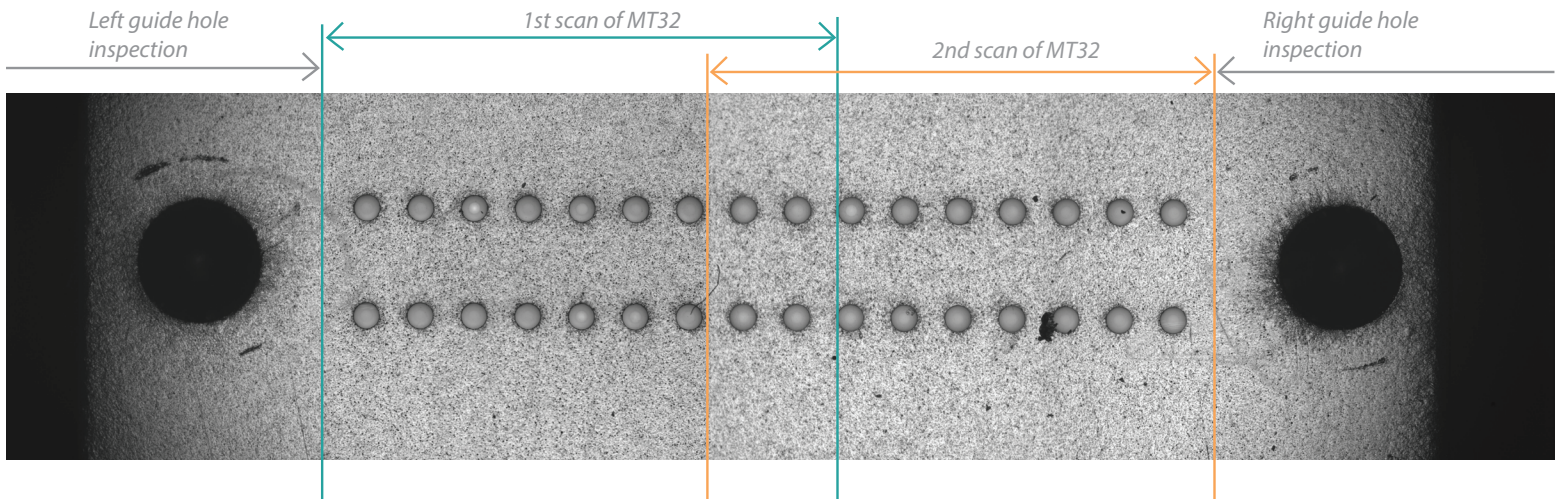
Manta & Manta+

Fiber Inspection Probe

for single and multi-fiber patch cords and bulkhead connectors

	Manta	Manta+
Autofocusing Push the button and get results.		✓
Large field of view (2.4 x 1.8 mm) Test multi-fiber connectors with up to 72 fibers in just two scans. Check the whole SMA connector endface in one shot.	✓	✓
High resolution Enjoy high-accuracy testing with 1.8 µm resolution and 0.75 µm defect size detection capability perfect for testing both multi-fiber and single fiber connectors.	✓	✓
Compact and ergonomic design Be free to use the probe as a handheld or desktop unit.	✓	✓
Easy testing with MaxInspect Use Manta+ with MaxInspect software. Enjoy user friendly interface and test connectors according to IEC standards or set your own limits.	✓	✓
Wide variety of tips Inspect single fiber, multi-fiber, SMA, OptiTip/OptiTap connectors and other military connectors, both the patch cord and bulkhead side of fiber interconnect.	✓	✓
Extended working distance Get inside patch panels to test MTP/MPO and other connectors.	✓	✓
Pass/Fail LED indicator See Pass/Fail result without looking at your tablet.	✓	✓

Manta+ is a revolutionary handheld microscope with autofocus primarily designed for testing of MTP/MPO and SMA connections. The whole MTP/MPO connector is tested in just two scans. Featuring resolution of a benchtop microscope, the probe gives the possibility to check multi-fiber, SMA and single fiber connectors in the field. Manta+ can be used for visual inspection of the connector end face for scratches, defects and contamination, as well as for automatic Pass/Fail testing based on IEC standards. Part number for ordering: [SMX-Manta+](#)



Specifications

Field of view: 2.4 × 1.8 mm

Defect size detection: 0.75 μm

Optical resolution: 1.8 μm

Magnification: 290 × *

Light source: royal blue LED, 447.5 nm

Camera type: digital, USB3.0, monochrome, 2592 × 1944, 1/2.5" CMOS

Live image: 800 × 800, 50 fps; 2592 × 1944, 14 fps full resolution

Power source: USB 3.0 Port of PC

Cable: USB 3.0, detachable

Focus: autofocus

Focus range: ±3mm

Physical

Dimensions (H×W×L): 64 × 28 × 233 mm (2.52 × 1.1 × 9.17 inches)

Weight: 425 g (0.94 lbs)

Housing material: aluminum

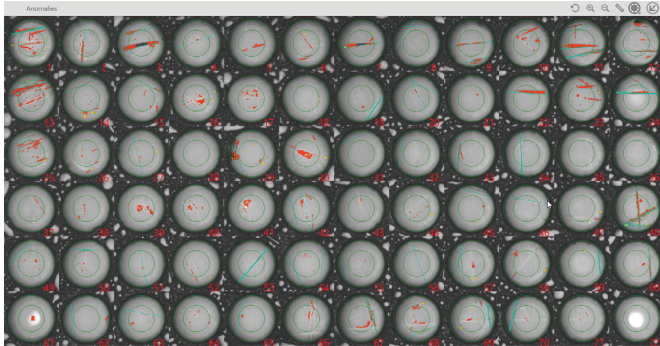
Barrel material: stainless steel

Applications

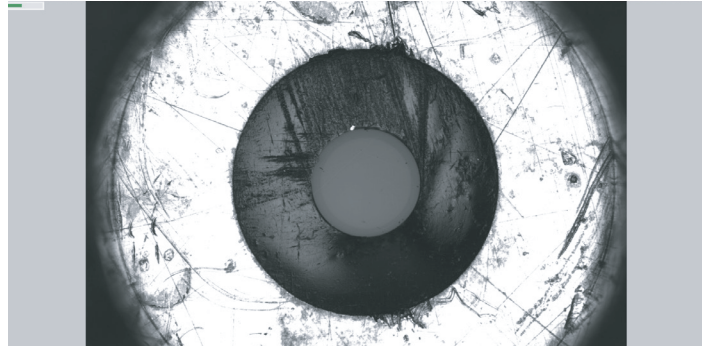
Optimal for connectors: industrial, telecommunication, military

Used with: desktop PC, laptop, tablet

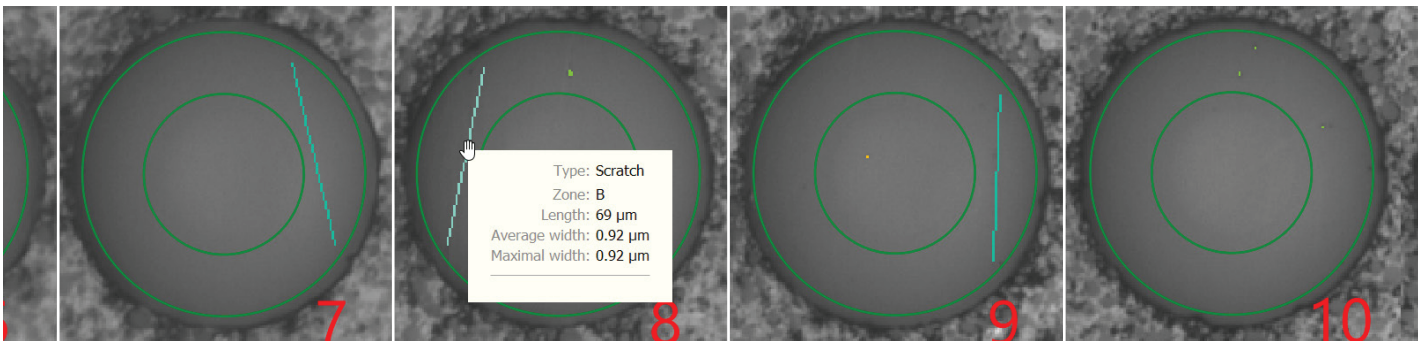
* Magnification of the whole system from an object to a monitor with a pixel density 96 ppi



Sample inspection of MT72: anomalies detection



Manta+ field of view enables to see a whole SMA ferrule.



Sample result of anomalies detection of MT12 (zoomed-in to demonstrate the defects defined by the software)

SENKO ADVANCED COMPONENTS, INC.

CALL 1-888-32-SENKO

Date modified: 03.13.2017

America

USA EAST 1-888-32-SENKO

USA WEST 1-858-623-3300

TEXAS 1-972-661-9080

Sales-Americas@senko.com

South America

BRAZIL +55-21-3736-7065

Sales-Brazil@senko.com