



## **SMART CLEANER MINI 2.0mm vs IBC M20**

### **Next Generation Cleaning Tool for Broadcast Applications**



**Your source for Optical Interconnect Solutions**  
Design • Test • Manufacture



## NEVER JUDGE A BOOK BY THE COVER

### THE ADVANTAGE OF BEING COMPACT

Race Cars and Mechanical Fiber Optic Connector Cleaning Tools share many similarities.

Racing teams are continually seeking **innovative designs** and better **quality components** to gain an edge over the competition.

The sole purpose of a mechanical connector cleaner is to make optical networks to run optimally at the fastest speeds and highest reliability. Why settle for old technology when there is something better?



*Formula 1 Ciera 2019*



*Formula 1 Ciera 1960*

#### Senko SMART CLEANER MINI 2.0MM



Tool Length: 108mm  
(Cap Off)



#### US Conec IBC M20

Tool Length: 174mm  
(Cap Off)

The compact size of the SMART CLEANER MINI 2.0mm enables this tool to access connector in confined spaces the legacy cleaners cannot fit into.

The SMART CLEANER MINI is a 400 capacity, but only needs to be engaged 1X what the IBC M20 need 2X to 3X engagements to clean.



# COMPARISON OF THE CLEANING TIPS

THE TIRES OF RACER AND CLEANING TIP ARE WHAT MAKES CONTACT WITH THE SURFACE

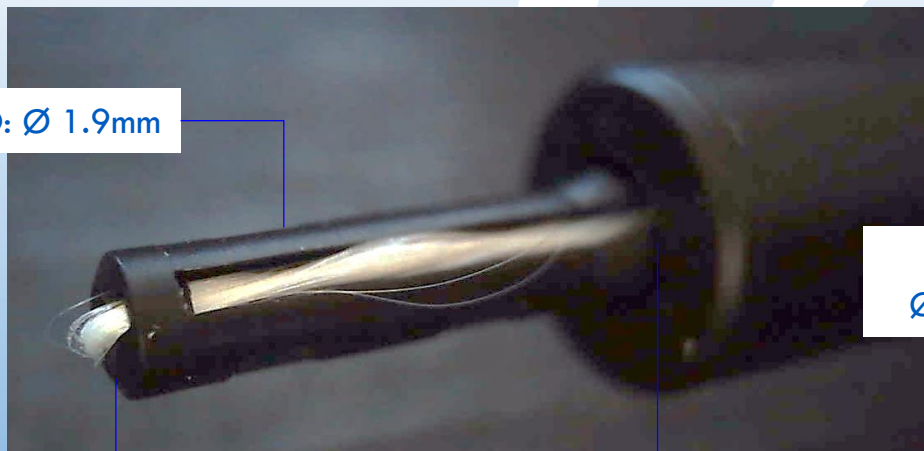


High performance tires are engineered for surviving the stress in turns while minimizing the amount of wear. Our cleaning tip is engineered for the rotational stresses and friction during the wiping process.

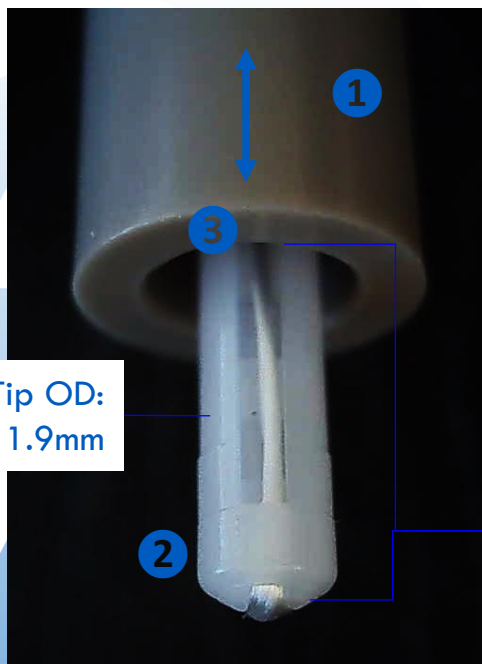
## SMART CLEANER MINI 2.0mm

### IBC M20 Cleaning Tip

Tip OD: Ø 1.9mm



Tip Protrusion: 8.25mm



Tip OD:  
Ø 1.9mm

### SMART CLEANER ADVANCEMENTS

- 1 Retracting gray barrel (3.25mm) to better protects the cleaning tip.
- 2 The cleaning tip material is stronger to prevent sheering and wear.
- 3 Tighter woven cleaning strand improves the performance wiping contamination from the ferrule surface.

Tip Protrusion:  
5mm



# MECHANICAL EFFICIENCY & HIGHER PERFORMANCE

## THE ADVANTAGE OF BEING COMPACT



Winning race teams use the strongest engines with the most efficiency.

The helical gear is a mechanical cleaner's engine. It determines the amount of wipe and the force of the tip rotation.



Helical Gear OD: Ø 17.75mm

Gear Length: 34.25mm

Helical Gear OD: Ø 7.6mm

Gear Length: 17.5mm

### SMART CLEANER ADVANCEMENTS

- ① Longer gear track gives SMART CLEANER users get 65% more wipe with a single engagement
- ② Larger gear uses a dual guide pin and IBC uses a single. The dual pin provides a smoother engagement and improves robustness.
- ② Gear system is made of static dissipative plastic. This prevents triboelectric charging which contributes to post-cleaning dust attraction. The IBC is NOT ESD safe.



# SMART CLEANER MINI 2.0MM (P/N SCK-SS-M-200A)

## KEY PRODUCT FEATURES

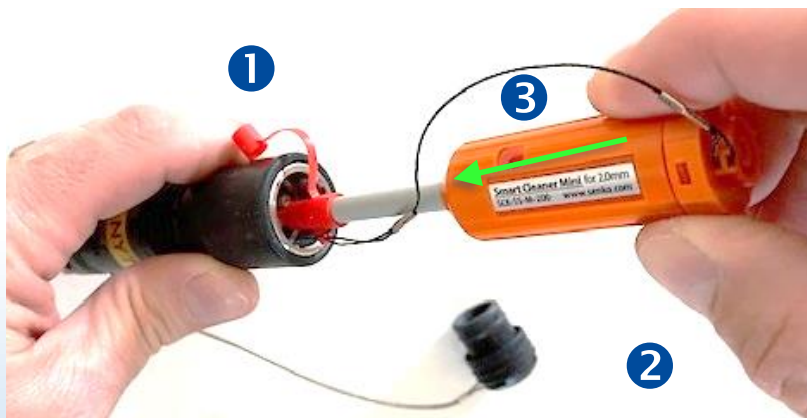


The cleaning tip rotates for wiping away residues and dust particles





# HOW TO CLEAN THE SMPTE 304M FIBRE ENDFACES WITHOUT REMOVING THE SLEEVE



## HOW TO CLEAN THE PLUG ENDFACES:

- 1 Open cover on red end cap
- 2 Hold cleaner towards the rear keeping finger tips located on the ridges
- 3 Push forward until audible click



## HOW TO CLEAN THE JACK ENDFACES

- 1 Place red end cap on back of handle
- 2 Hold cleaner towards the rear keeping finger tips located on the ridges
- 3 Insert cleaning tip into the jack
- 4 Push forward until audible click