

3532 Seagate Way, Suite 100,
Oceanside, CA 92056, USA
<http://www.sumix.com>
E-mail: info-team@sumix.com
Tel.: +1 (877) 233-3385

Manta HM

High Magnification

Automated microscope for inspection of single and multi-fiber patch cords, bulkhead and QSFP modules

Up to 96 fibers
in one screen
(FOV: 4.2 × 2.8 mm)

360× magnification

Autofocus



20 MP sensor inside



Pass/Fail
verdict per IEC
standards



Compact in size, big on capability

Unsurpassed optical performance*

High-contrast precision optics, optimal axial illumination and 20MP sensor provide for accurate measurements of small anomalies.

*among handheld microscopes for multi-fiber inspection with a similar FOV.

Large field of view

Pass/Fail analysis of an MPO connector is done in a single scan taking just 3 seconds (for MPO12/16).

Guide holes and ferrule surface are inspected at the same magnification as fibers.

Versatility from bench to patch panel

Manta HM can be used as a handheld probe for testing transceivers and bulkhead connectors in patch panels, as well as a benchtop solution for production lines and labs.

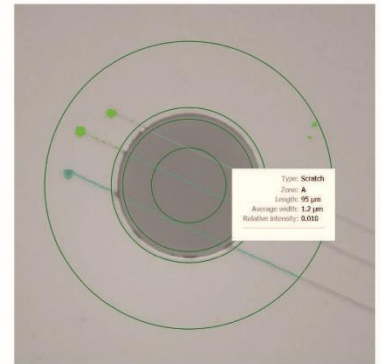


Application: production lines, laboratories, incoming inspection, maintenance in data-centers.

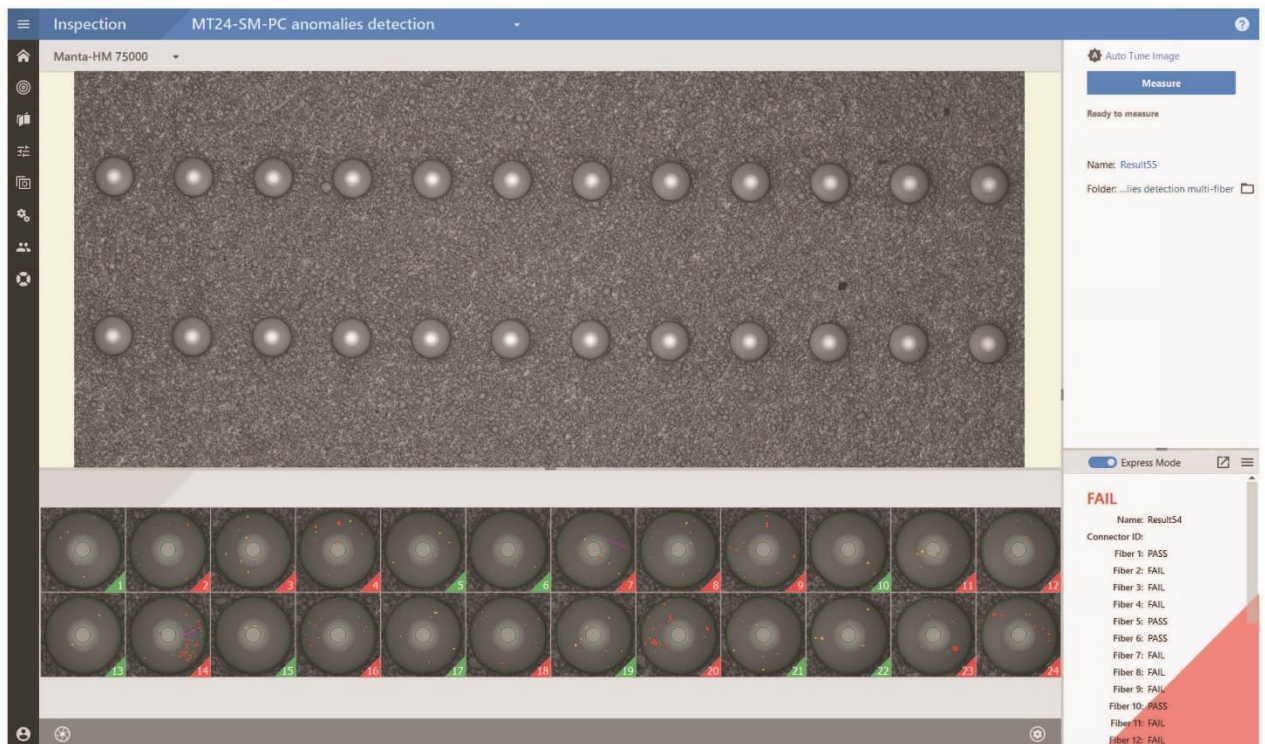
Recommended for: high-power laser applications, single mode connector inspection, final verification, and other cases where small details matter.

Specification

Connectors inspected:	Male and female MPO connectors (SM and MM), MT ferrules, LC, FC, SC, E2000™, QSFP, ARINC, MIL-38999, High-power SMA, Avim, mini-Avim, 3M™ Expanded Beam Optical Connector, ODC®, Q-ODC®, MXC®, HMFOC, CS®, SN® and more
Measurement time*:	2.6 sec for MT12, 3.5 sec for MT16, 4.5 sec for MT24, 10 sec for MT72
* doesn't include autofocusing time	
Field of view:	4.2 × 2.8 mm
Defect size detection:	0.5 μm
Effective resolution:	1.5 μm (based on MTF calculations)
Magnification:	0.75 μm/px or 360× (for a 24" display 1920x1080)
Focus:	Autofocus
Camera type:	CMOS, 20MP, monochrome
Power source:	USB 3.0 port of PC
Dimensions (H × W × L):	70 × 28 × 246 mm (2.76 × 1.1 × 9.69 inches)
Weight:	491 g (1.08 lbs)
Material:	aluminum housing, stainless steel barrel
Compatible with:	desktop PC, laptop, tablet
Operating system:	Windows 10
Software integration tools:	Excel/CSV, SQL, WebSocket API
Centralized data-base connectivity:	Yes
Compliance with IEC requirements:	Yes
NIST traceability:	Yes



Scratches detected on SF end face



Measurement result for a 24-fiber MPO connector