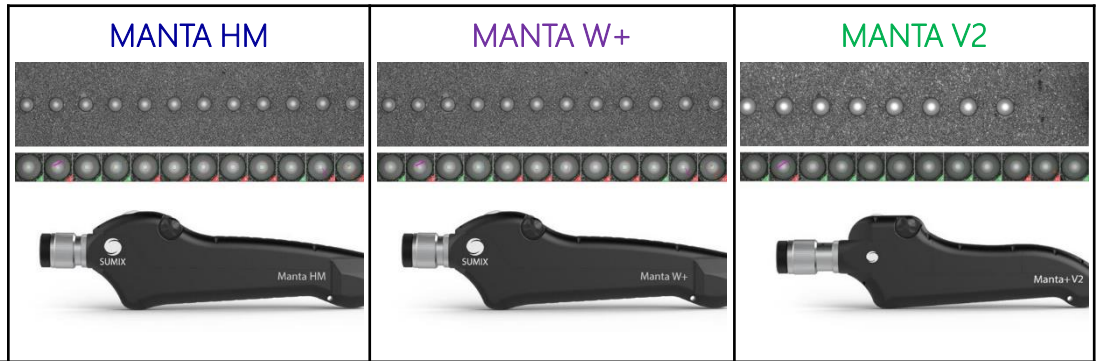




KEY FEATURES FOR ALL VERSIONS OF THE MANTA SERIES SCOPES:

- ✓ Multi fiber and single fiber end face inspection
- ✓ IEC 61300-3-35 Pass/Fail analysis
- ✓ Ability to create customized test criteria
- ✓ Pass-Fail indicator light
- ✓ Autofocus for repeatable measurements
- ✓ Anomalies detection and measurement
- ✓ Inspection software compatible with interferometers



SENKO Part Number:	SMX-MANTA-HM	SMX-MANTA-W+	SMX-MANTA+V2
Field of View:	4.2mmx 2.8mm	4.1mm x 3.0mm	2.4mm x 1.8mm
Defect detection size:	0.5µm	0.75µm	0.75µm
Optical Resolution:	1.5µm	1.8µm	1.8µm
Inspection Times:	2.6 secs for 12 fiber MT 3.5 secs for 16 fiber MT 4.5 secs for 24 fiber MT	2.1 secs for 12 fiber MT 2.3 secs for 16 fiber MT 4.0 secs for 24 fiber MT	6.5 secs for 12 fiber MT 6.9 secs for 16 fiber MT 9.7 secs for 24 fiber MT
Magnification on 1920x1080 screen:	360X	260X	290X

RECOMMENDED ACCESSORIES FOR THE MANTA SERIES INSPECTION SCOPES

<p>MANTA Benchtop Stand SENKO Part Number (W+ & HM) MNT-W-STAND SENKO Part Number (V2) MNT-STAND</p>	<p>The MANTA stand is made for securing the scope on the benchtop</p> <ul style="list-style-type: none"> ✓ Stable inspection images ✓ Weighted base 	
<p>MPO Verification Module SENKO Part Number: MPO-VERIFIER (HM and W+ only)</p>	<p>End-to-end MPO polarity verification</p> <ul style="list-style-type: none"> ✓ Type A, Type B, Type C & Custom ✓ Non Contact ✓ Center (12) & offset (16) key MPO ✓ Automatic test analysis 	
<p>Inspection Tip Holder for single fiber inspection tips SENKO Part Number: MNT-ADP</p>	<p>The inspection tip holder makes it possible to use the single fiber inspection tips on the MANTA scopes.</p>	