

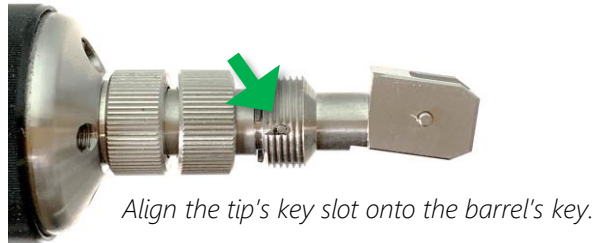
# SENKO SMART PROBE 2 SCOPE GUIDE: HOW TO INSPECT SC/APC CONNECTORS

SC/APC In Adapter Inspection Tip Part Number:

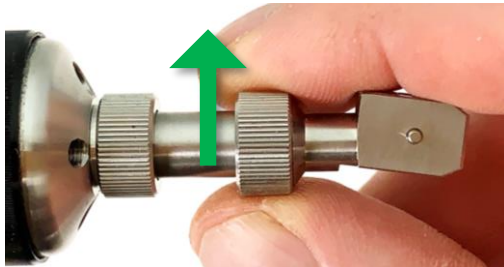
SCK-SPT2- SC-APC-F



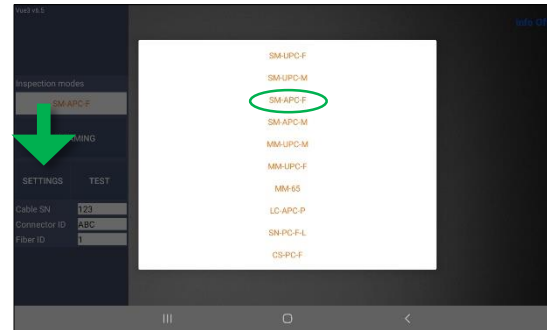
1. Place the inspection tip on the scope barrel.



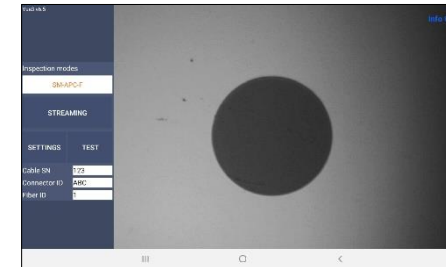
2. Secure the inspection by rotating the barrel collar counterclockwise.



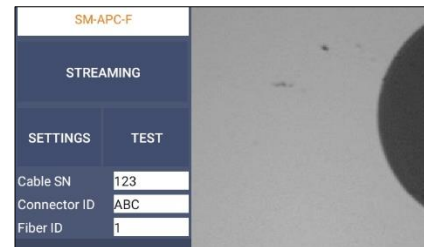
3. Set the Inspection Mode to **SM-APC-F**.



4. Get the image in focus and centered on the screen.



5. Document the end face surface quality by pushing the Test button on the screen or the gray button on the scope's housing.



- The VUE3 software measures the end face to the IEC 61300-3-35 Ed 2.
- The red and yellow markings highlight the problems areas.

## Helpful Tips

Benefits of using the SC/APC in adapter inspection tip with a SC adapter to inspect your cable assemblies :

- ✓ The key on the inspection tip will align the angles of the connector end face and the inspection's scope's camera.
- ✓ Save time by using the same inspection tip to check both ends of the connector pair.

- ✓ Using the SC adapter prevents accidentally bumping the connector end face on the metal inspection tip.