

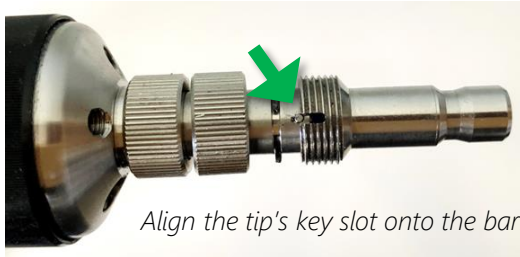
SMART PROBE 2 SCOPE HOW TO: INSPECT SC/UPC CONNECTORS

SC/APC In Adapter Inspection Tip Part Number:

SCK-SPT2- SC-UPC-F

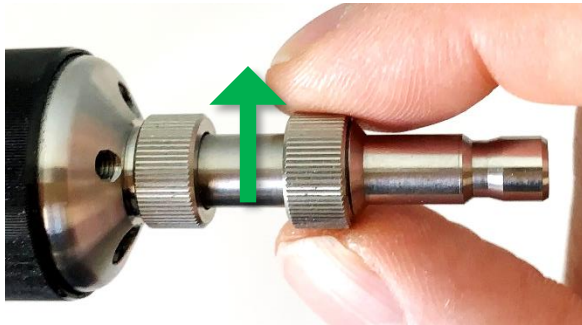


1. Place the inspection tip on the scope barrel.

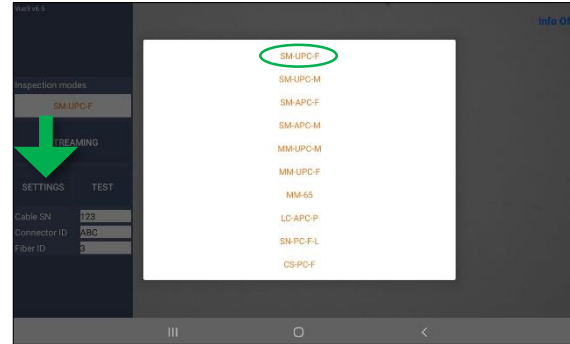


Align the tip's key slot onto the barrel's key.

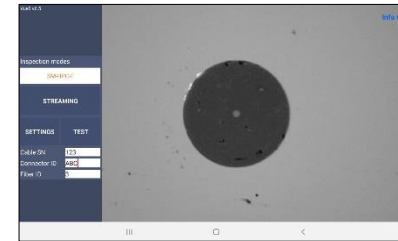
2. Secure the inspection by rotating the barrel collar counterclockwise.



3. Set the Inspection Mode to **SM-UPC-F**.

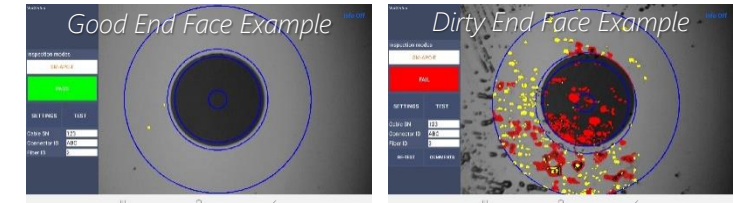


4. Get the image in focus and centered on the screen.



The scope's focus wheel.

5. Document the end face surface quality by pushing the Test button on the screen or the gray button on the scope's housing.



- The VUE3 software measures the end face to the IEC 61300-3-35 Ed 2.
- The red and yellow markings highlight the problems areas.

Helpful
Tips

Benefits of using the SC/UPC in adapter inspection tip with a SC adapter to inspect your cable assemblies :

- ✓ Save time by using the same inspection tip to check both ends of the connector pair.
- ✓ Using the SC adapter prevents accidentally bumping the connector end face on the metal inspection tip.