

# HOW TO SERIES:

## INSPECTION, CLEANING AND MATING IP 16 SN CONNECTORS

This process is applicable to:

- IP 16 SN connectors
- SN/UPC Connectors

Senko Part Number	Description
SCK-DC-SN	Senko One-Click Duplex SN Cleaner
SCK-VM3000-01	Senko SMART PROBE 2 WIFI Inspection Scope
SCK-SPT2-PC125-M	Senko SMART PROBE 2 Inspection Tip for Unmated 1.25mm UPC end faces
SCK-SPT2-SN-UPC-F	Senko SMART PROBE 2 Inspection Tip for In Adapter SN/UPC end faces



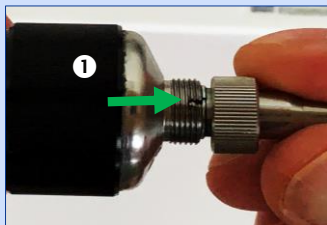
SMART PROBE 2 WIFI Inspection Scope  
with the In Adapter SN Inspection Tip



Senko One-Click Duplex SN Cleaner

Setting Up the SMART PROBE 2 WIFI scope for inspecting the IP 16 SN in adapter end faces.

Use In Adapter Inspection Tip P/N: **SCK-SPT2-SN-UPC-F**.



- 1 Align the pin on the inspection tip into the key slot on the scope.
- 2 Push the button to power on the scope. The light indicates when the scope is on.
- 3 Turn the front LED light with the side switch for extra light while inserting the inspection tip.

### Trouble Shooting Tips

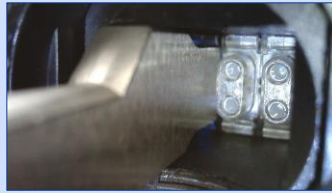
#### Scope not powering on?

Check the battery lights. If the white lights are not on, try recharging the battery.

#### Scope is not connect to device?

1. Look for the WIFI to see if the is on. If the light is off, check the **GRAY** switch to make sure it is in the up position.
2. Go to the Setting on the device and make sure the network matches the scope's serial number on the scope's able. The scope's password is **12345678**.

## Inspecting the IP 16 SN in adapter end faces.

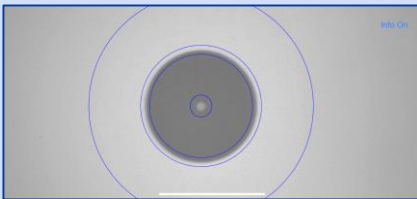


- ① Insert the SMART PROBE 2 scope on the first duplex adapter port to inspect End Face 1.
- ② Rotate the **SMART PROBE 2**  $180^\circ$  to inspect End Face 2.

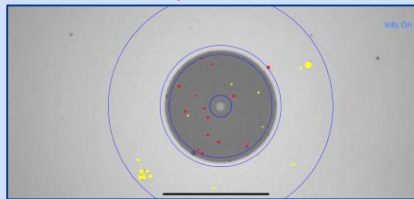
**Repeat process until all of the end faces have been visually inspected.**

## Inspection Examples

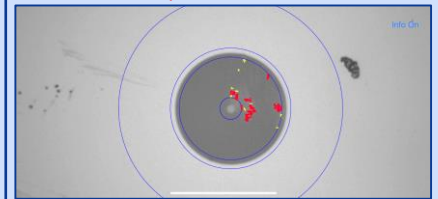
☑ Passing IEC 61300-3-35



☒ Fail example of contamination



☒ Fail example of surface scratches



## Cleaning the IP 16 SN in adapter end faces with the Senko One-Click Duplex SN cleaner.



- ① Align One-Click Duplex SN cleaner's tip on the duplex adapter ports.
- ② Push the cleaner forward until you hear the **CLICK** to clean the end faces.

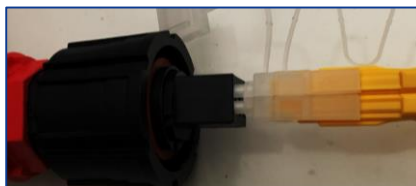
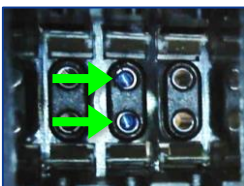
## What make the **SENKO One-Click Duplex SN** cleaner special?



The 22cm (8.6") long reach cleans SN duplex assemblies without disrupting the adjacent assemblies.



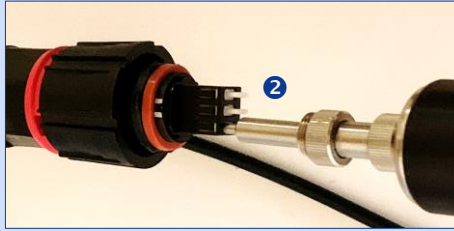
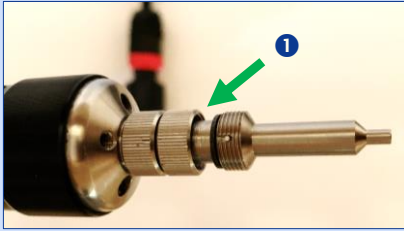
The cleaning tip has a claw feature. This feature grips the adapter ports for SN end faces in the adapter. The result is highly precise alignment of the cleaner's dual cleaning tips so the touch the center of the two end faces.



The clear end cap makes it easy to verify the SN ferrules are properly seated in the end cap for cleaning the drop assembly.

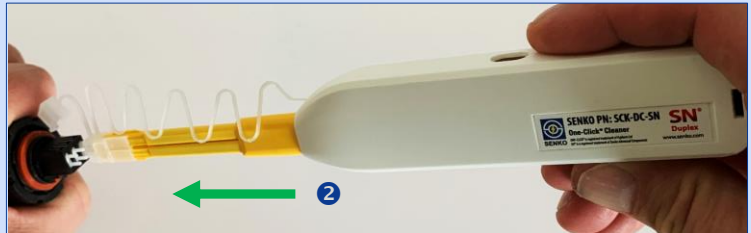
Inspecting the **IP 16 SN** drop assembly end faces with the SMART PROBE 2 WIFI scope.

Use the Universal 1.25mm UPC inspection tip. **SENKO** Part Number: **SCK-SPT2-PC125-M**



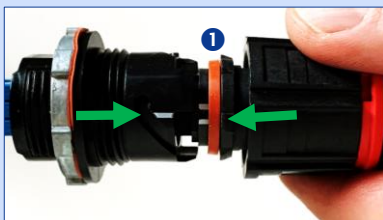
- 1 Align the pin on the inspection tip barrel into the key slot on the 1.25mm UPC inspection tip.
- 2 Align the inspection tip onto the ferrule end face.
- 3 Select the Inspection Mode profile **SM-UPC-M**.

Cleaning the **IP 16 SN** drop assembly end faces with the Senko One-Click Duplex SN cleaner.



- 1 Open lid on the clear end cap and place the cleaner on to dual ferrules.
- 2 Push the cleaner forward until you hear the **CLICK** to clean the end faces.

Mating the **IP 16 SN** connectors.



- 1 Align the **WHITE** marks on the drop assembly and adapter.
- 2 Move the **BLACK** collar forward and rotate it clockwise. Leave the red lock ring back in this step.
- 3 Slide the **RED** lock ring forward to secure the connection.



For more information and technical support, please contact your local **SENKO** sales representative or email us at [sales@senko.com](mailto:sales@senko.com).

You can find more information including How To videos at [www.senko.com](http://www.senko.com).