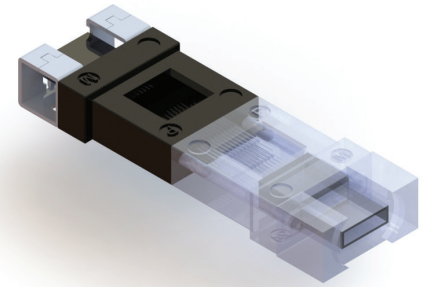


High quality material for trusted reliability

SENKO's MT Ferrule, made from high quality glass filled PolyPhenylene Sulfide (PPS) is used with our MPO Plus Connectors and tested against the stringent requirement of Telcordia's GR-1435. Glass filled PPS is ideal for precise tolerance molded components because it has minimal water absorption and has a very low coefficient of linear thermal expansion. As such, the ferrule offers excellent performance and properties for all environments.



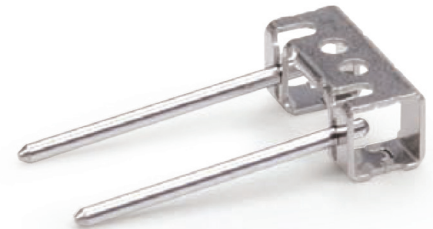
Ultra precision molding for uncompromised performance

With the recent advancement to precision molding technology, SENKO ferrules are manufactured with much tighter specification as compared to conventional products. With these ultra-precise dimensions, SENKO is able to achieve the lowest industry insertion loss of 0.25dB guaranteed with a typical IL of greater than 0.1dB for the SM and MM Low loss ferrule. SENKO's Low Loss ferrules are made to meet the new IEC 61755-3-31 Grade B requirements.



Ultra precision machined metal guide pin

SENKO's innovative chamfered MT Guide pin design together with its improved spring are key to confidently align 2 MT Ferrules and provide a reliable fiber to fiber mating anytime, every time. SENKO's MPO Plus chamfered stainless steel guide pins are manufactured to the tightest specification having a tolerance of +/-0.1Um for the SM Super low loss guide pin, allowing a super precision alignment of the ferrule. Guide pins are available for SM Grade, SM Super Low Loss grade MM Grade and MM Super Low Loss grade.

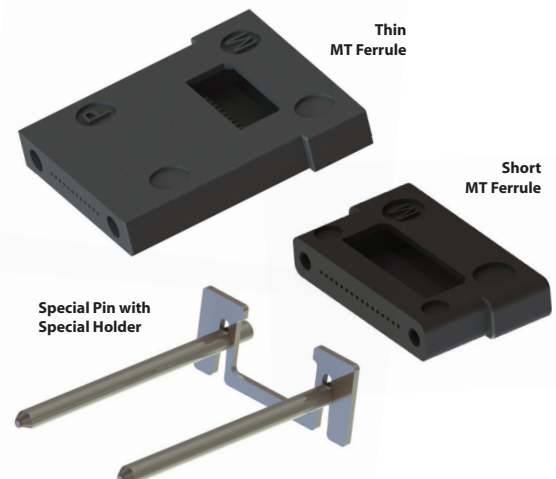


MPO^{PLUS} Specialty ferrules and guide pins

SENKO designs and manufactures specialty MT Ferrules and Guide Pins for a variety of applications. Versions up to 48 fibers with various dimensions are achievable. Please contact the SENKO sales team for further information.

FEATURES

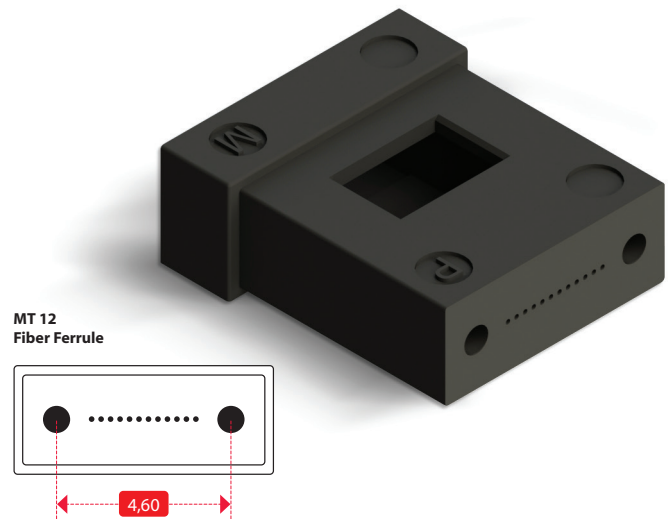
- Special MT ferrule having higher fiber count
- Special MT ferrule having different dimension
- Thin MT Ferrule, Short MT Ferrule
- Special Guide pin and Pin holder



MPO+PLUS® MT Ferrule

12 Fiber Ferrule

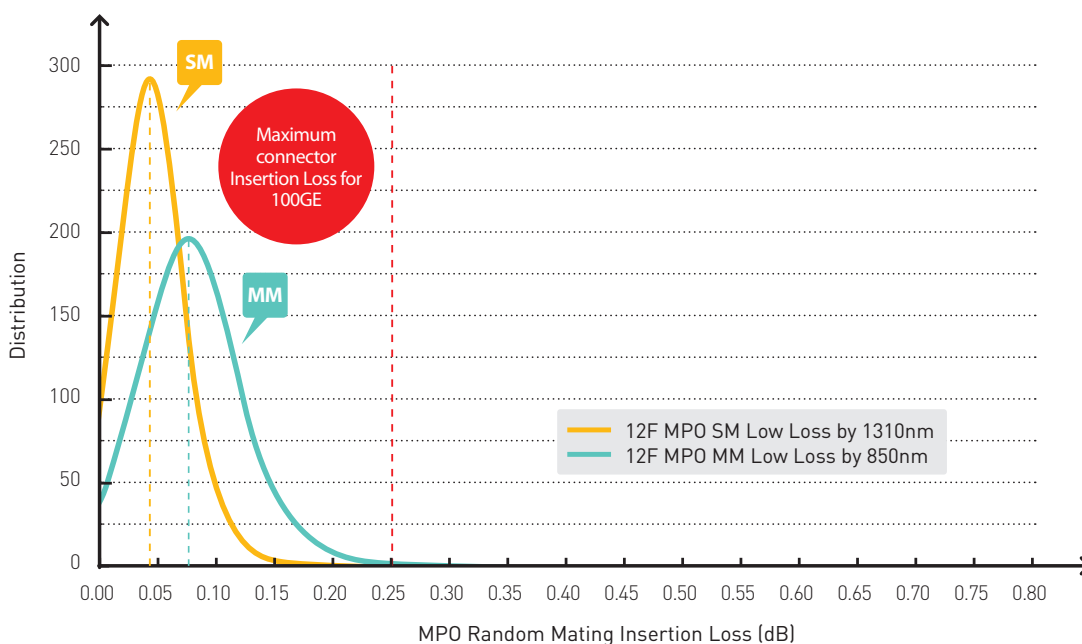
SENKO's MPO Plus MT 12 fiber ferrule are the most common used MT Ferrule in the market which gives the best combination of easy-to-use and low insertion loss. The SM Low Loss and MM Low Loss now guarantees the industry's lowest insertion loss of 0.25dB, with a typical of greater than 0.1dB, which exceeds the IEC 61755-3-31 Grade B Requirement. Quality, Price, durability and ease of assembly makes the 12 fiber your best choice.



SPECIFICATION	SM LOW LOSS	SM STANDARD	MM LOW LOSS	MM STANDARD
IL Typical vs Reference connector	0.10dB	0.20dB	0.08dB	0.15dB
IL Max vs Reference connector	0.25dB	0.70dB	0.25dB	0.50dB
IL Typical Random Mating	0.12dB	0.20dB	0.10dB	0.15dB
Random Mating IEC Spec: IEC61755-3-31	Grade B (0.25)	Grade C (0.5)	n/a	n/a
Return Loss	60dB	60dB	25dB	25dB
Recommended PIN Used	SM Low loss Pin	SM Pin	SM Pin	MM Pin

* Above number is only achievable when using SENKO Recommended Reference Jumper, Polishing process and testing method

* SM Low loss and MM Low loss Max IL 0.25dB to be 95% of all fiber



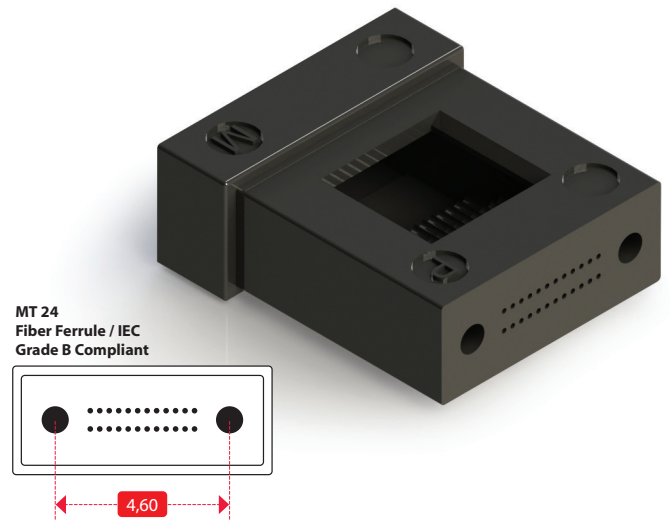
**SENKO SM and MM
12 Fiber Super Low Loss
Insertion loss distribution
MAX IL 0.25dB**

** Above insertion loss and return loss are only achievable when proper polishing is made tested by SENKO's recommended process

MPO^{PLUS} MT Ferrule

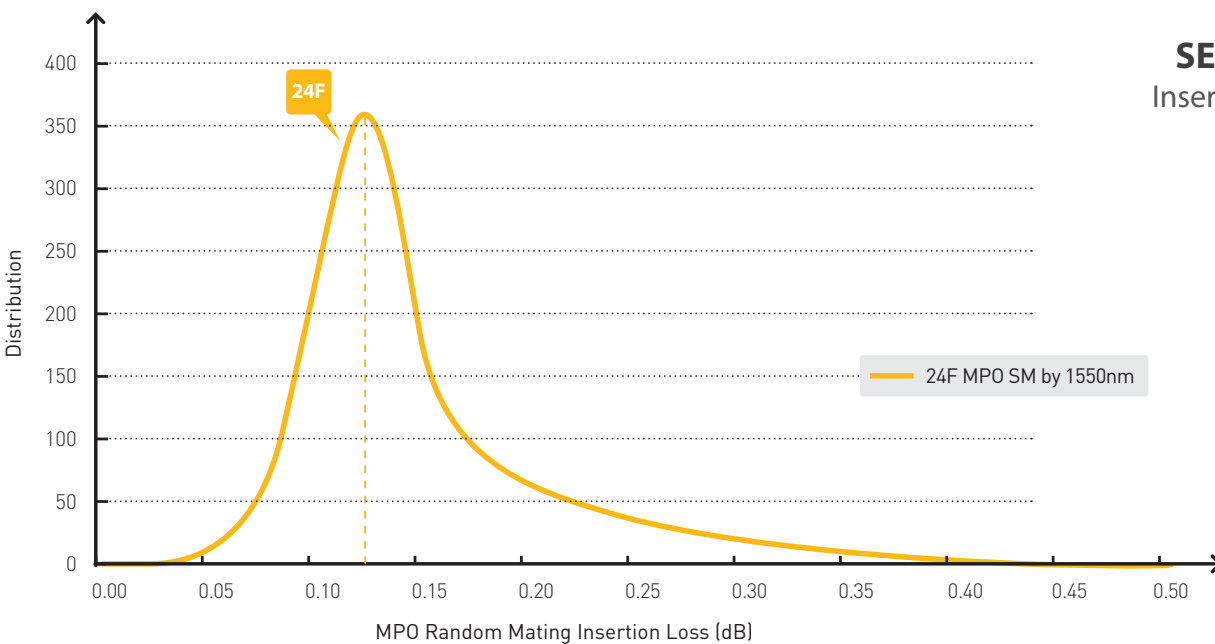
24 Fiber Ferrule

SENKO's MPO Plus 24 fiber MT Ferrule consists of 2 rows of 12 high precision fiber holes, yielding a high density connection with industry leading insertion loss values. Versions available in SM, MM and Low Loss MM make it the ideal choice for super high density connections and high speed 100G and 400G parallel optics platforms. SM 24 and MM 24 fiber are to be used with a 20N High force spring.



SPECIFICATION	SM	MM LOW LOSS	MM
IL Typical vs Reference Connector	0.25dB	0.15dB	0.20dB
IL Max vs Reference Connector	1.00dB	0.35dB	0.50dB
IL Typical Random Mating	0.50dB	0.20dB	0.25dB
Return Loss	60dB	25dB	25dB
Recommended PIN Used	SM Pin	SM Pin	MM Pin

* Above number is only achievable when using SENKO recommended reference jumper, polishing process and testing method



SENKO SM 24 Fiber
Insertion loss distribution
MAX IL 1.00dB

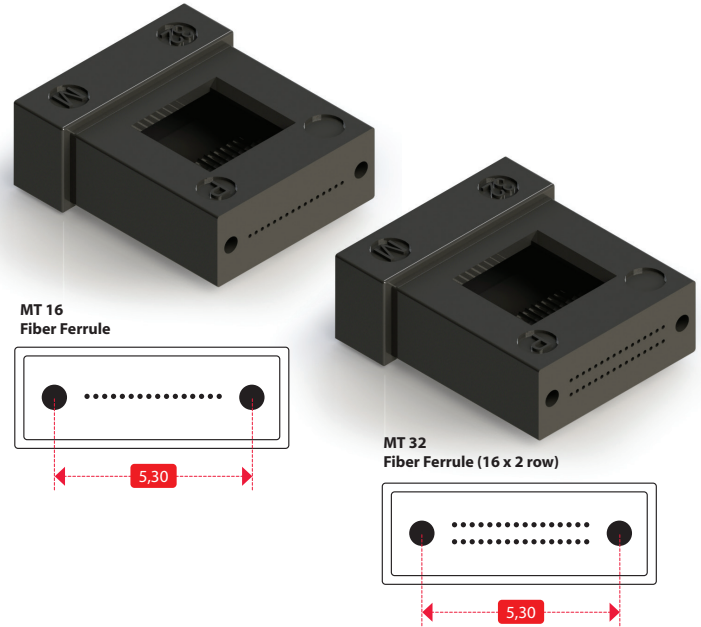
** SM 24 and MM 24 fiber are to be used with a 20N High force spring



MPO+PLUS® MT Ferrule

16 and 32 Fiber Ferrule

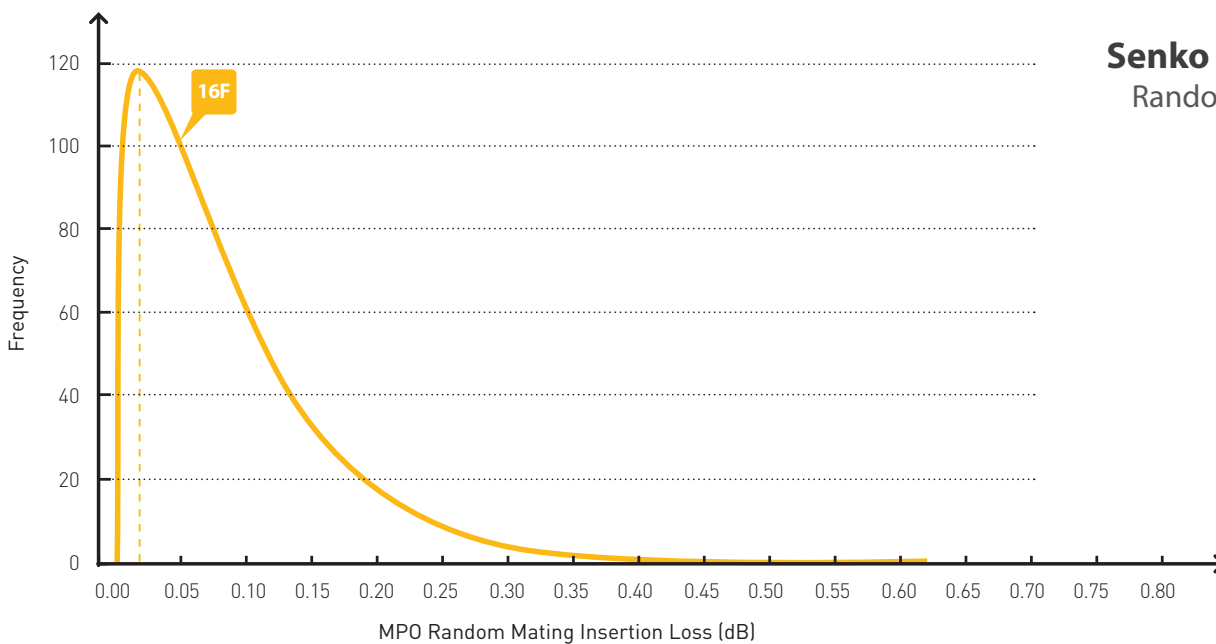
SENKO's MPO Plus MT 16 and 32 fiber ferrules are designed to meet TIA 604-18 standard which addresses 16 fiber hole width MPO requirements and are available in single row 16 fiber and 2x16 row 32 fiber configurations. Industry leading 16F SM Low Loss ferrules meet the most demanding insertion loss and return loss requirements for high speed 100G, 400G and beyond parallel optical networks.



SPECIFICATION	16F SM LOW LOSS	16F MM LOW LOSS	16F MM	32F MM
IL Typical vs Reference Connector	0.15dB	0.15dB	0.20dB	0.25dB
IL Max vs Reference Connector	0.35dB	0.35dB	0.60dB	0.60dB
Random Mating Grade IEC 61755-3-31	0.Grade B*	n/a	n/a	n/a
Return Loss	60dB	25dB	25dB	25dB
Recommended PIN Used	SM Low Loss Pin	SM Pin	MM Pin	MM Pin

- FEATURES**
- One row of 16 fiber or 2 row of 16 fiber (= 32 Fiber)
 - New Pin to Pin width of 5.3mm
 - New pin OD Spec of 0.55mm
 - New MT specification being standardized by TIA 604-1 (FOCIS 18) and IEC (61754-7-3)

* Meets the current IEC Grade B performance requirement for 12F-MT ferrule. The grade specification for 16F MT is underdevelopment in IEC
 **Above number is only achievable when using SENKO recommended reference jumper, pPolishing process and testing method



Senko SM 16F Low Loss
Random Mating Test Result