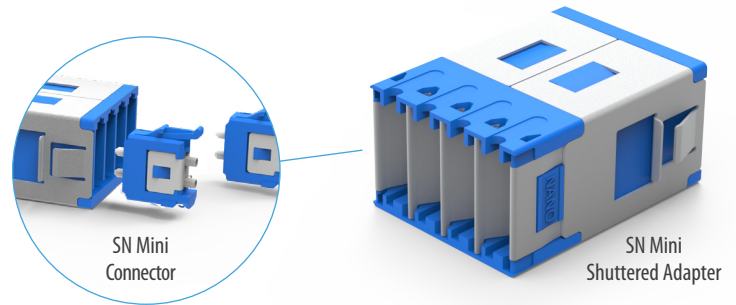


SN[®] **MINI ADAPTER** Shuttered SN Footprint 4-Channel (8F)



SENKO's SN[®] Mini, shuttered, 4-channel (8 fibers) adapters are designed to offer maximum packing density at the front of patch panels while significantly reducing the space consumption at the rear of the panel for BTW (Behind The Wall) connectivity. In combination with SN[®] Mini connectors, as much as 14.1mm can be saved compared with standard adapters and connectors, making it the ideal solution for opto-electronic applications requiring circuit boards or other vital components to share the same space as fiber the optic connectivity. The SN[®] Mini adapter incorporates integrated shutters on the front side preventing unwanted contaminants entering the adapter, and providing the operator with laser safety during operation. When the connector is patched to the adapter, the body of the connector (not the ferrule) pushes the shutter open allowing the ferrules to be guided into the adapter.

All of SENKO's SN[®] adapters are designed either to be snapped into panel cut-outs or screwed into place. Adapters incorporating an integrated fixing flange will require additional space between each cut-out and the maximum density per 1 RU (Rack Unit) will be lower.

FEATURES

- Up to 70% BTW space saving compared with standard adapters and connectors
- Maximum density 216CH/432F in 1RU
- Integrated shutter reduces impact of dust and dirt ingress
- Accepts SN[®] mini connectors (BTW side) and standard (front side)
- Supports 200G/400G VSFF connectivity
- Color coded for rapid Identification of fiber-type
- Telcordia, ANSI, TIA and IEC Compliant
- Identification marking for fast and simple connector alignment

APPLICATIONS

- Customized opto-electronic equipment
- Highest packing density within patch panels
- Spine/leaf architectures within hyperscale data centers
- High-density switch replication
- High-density centralized cross-connects
- Mass server consolidation EoR, MoR

KEY BENEFITS

- ✓ **Integrated dust shutter**
- ✓ **Maximum BTW space**

SN® MINI ADAPTER

Shuttered, SN footprint, 4-channel (8F)

SN ADAPTER DATA SHEET

Mechanical Data

| Mechanical Data | Value |
|------------------------|---|
| Durability | 500 matings per TIA-568 |
| Fixing Method | Snap-fit |
| Housing Material Type | Plastic |
| Shutter Material Type | Metal stainless steel |
| Sleeve Material | Zirconia |
| Dust Protection Method | Integrated shutter mechanism (<i>operated by connector insertion</i>) |

Optical Data

| Optical Data | Value |
|------------------------------|-------|
| Typical Insertion Loss (dB)* | 0.10 |
| Max. Insertion Loss (dB)* | 0.20 |

* Based on master grade jumper to low loss random mating test

Environmental Data

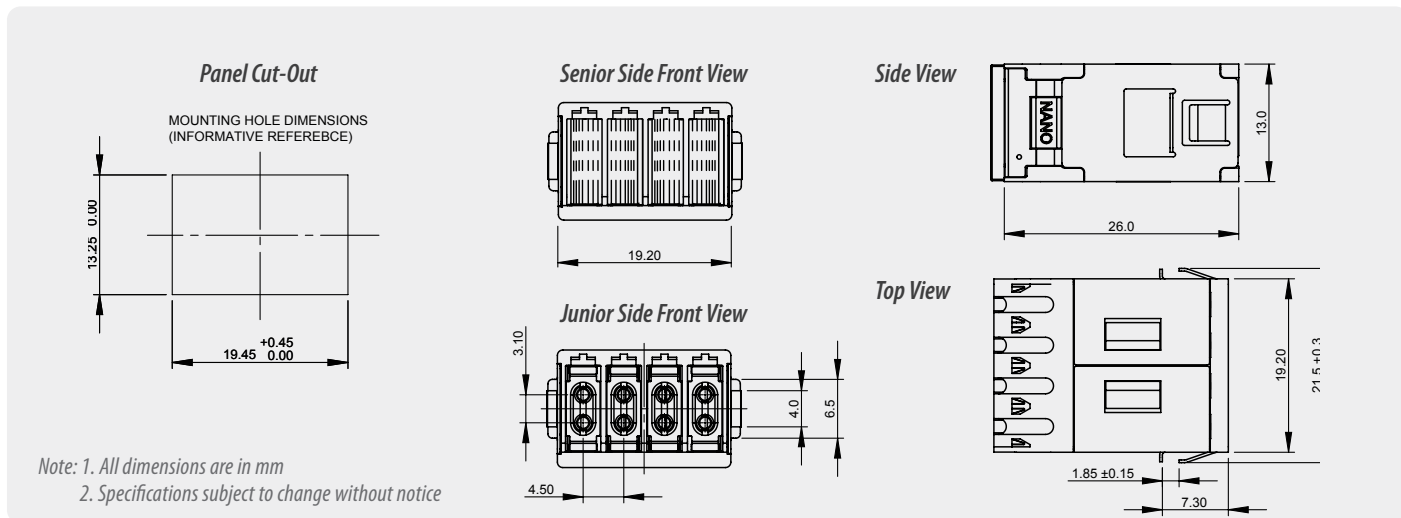
| Environmental Data | Value |
|-----------------------|----------------|
| Operating Temperature | -40°C to +75°C |
| RoHS Compliance | 2015/863 RoHS |
| REACH Compliance | Yes |
| Free of Halogen | Yes |
| Humidity Resistance | 95% |

SN[®] MINI ADAPTER

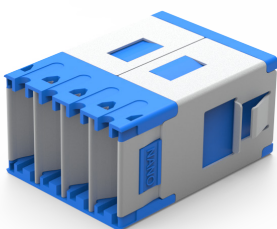
Shuttered, SN footprint, 4-channel (8F)

SN[®] ADAPTER DATA SHEET

4-Channel Adapter Drawing



ORDERING



| SN FOOTPRINT TYPE | | FLANGE TYPE | | HOUSING COLOR | |
|-------------------|--|-------------|----------------|---------------|-------------------------|
| 6MD | SN 4-Channel (8F) Mini Shuttered Adapter | 1 | With Flange | 1 | Blue (SM PC/UPC) |
| | | 2 | Without Flange | 3 | Green (SM APC) |
| | | | | 7 | Heather Violet (MM OM4) |
| | | | | 9 | Aqua (MM OM3) |

6MD - **27** ORDER CODE example

Note: Adapter supplied with protective dust-cap on both sides

SENKO[®]

Advanced Components

sales@senko.com
1-858-623-3300

senko.com/contact