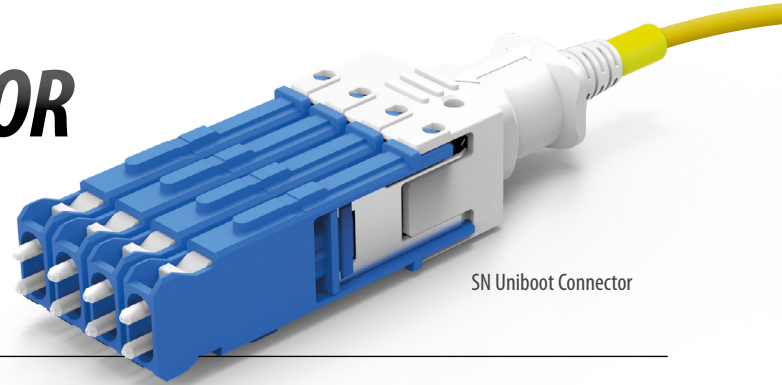


SN[®] **UNIBOOT CONNECTOR**

4-Channel (8F) Variable Pitch



The SN[®] Uniboot is a revolutionary connector that allows four duplex SN[®] connectors to be patched simultaneously in one operation. Subsequently, the SN[®] Uniboot offers the same degree of flexibility as an MPO 8-fiber connector but without the need for breakout cassettes or fan-out cables to transition from Base-8 to Base-2. This dual functionality makes the SN[®] Uniboot granular enough for duplex server connections, optimized for high-density trunks and the perfect match to high data rate transceivers utilizing four optical lanes (8 fibers).

The SN[®] Uniboot is the first telco-grade connector that combines the performance and reliability of ceramic ferrules with the modularity and scalability of the MPO connector. Network operators can now build networks that are more cost effective, more flexible and provide extended reach at higher data rates.

FEATURES

- Fast patching with uniboot design
- Base-8 and Base-2 compatibility
- Allows up to 432 fibers per 1RU (Rack Unit)
- Eliminates the need for fan-outs and cassettes
- Provides ferrule-based alternative to MPO
- Increased flexibility and extended reach
- Significantly lower total cost of ownership
- Telco grade optics with zirconia ferrules
- Less complexity versus MPO

APPLICATIONS

- Base-2 server consolidation
- Base-8 switch replication
- Telco exchanges
- Broadcast
- Enterprise network
- Colocation data centers
- Finance data centers

KEY BENEFITS

- ✓ **Base-8 and Base-2 compatibility**
- ✓ **Trunk cable systems**

SN® UNIBOOT CONNECTOR**4-channel (8F)**

SN® CONNECTOR DATA SHEET

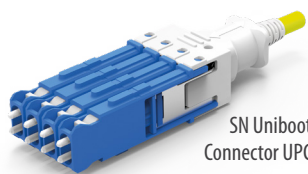
Mechanical Data

	Value
Durability	500 matings per TIA-568
Fiber Count	Base-8 (8 fibers)
Cable Suitability	8-fiber micro cable
Ferrule Material	Zirconia
Dust Protection Method	Removable dust plugs that encapsulate the ferrules

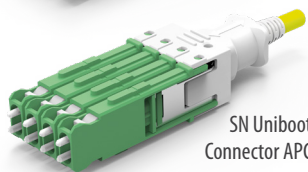
Optical Data

	Singlemode				Multimode
	UPC		APC		MM
	SM Premium Low Loss	SM Premium	SM Premium Low Loss	SM Premium	Premium
Typical Insertion Loss (dB)*	0.05	0.08	0.07	0.12	0.05
Max. Insertion Loss (dB)*	0.15	0.20	0.15	0.25	0.15
Typical Return Loss (dB)*	≥55		≥65		≥25
Ferrule Diameter (µm)	125.5				127

* Based on master grade jumper to low loss random mating test

ORDERINGSN Uniboot
Connector UPC**CONNECTOR TYPE**

SN Uniboot Connector UPC Unassembled

SN Uniboot
Connector APC**CONNECTOR TYPE**

SN Uniboot Connector APC

*Note: Connector supplied with protective dust-cap**Contact sales@senko.com
for availability and to learn more***Contact
SENKO**

SENKO[®]

Advanced Components

sales@senko.com
1-858-623-3300

senko.com/contact