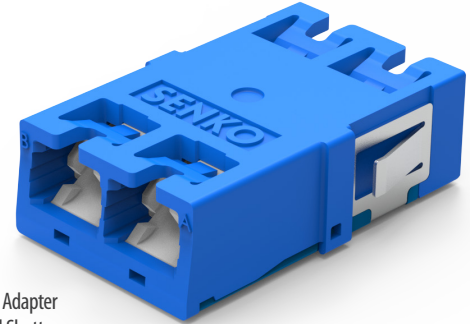


CS[®] ADAPTER Standard Internal Shutters 2-Channel (4F)



CS 2CH (4F) Adapter
with Internal Shutters

SENKO's 2-Channel (4f) shuttered adapter is specifically designed to enhance ingress protection and laser safety during regular Moves, Adds, and Changes (MACs) in network operations. The adapter incorporates an internal shutter that only opens when the outer body of the CS[®] connector makes contact during insertion. This automatic operation streamlines the patching process and eliminates the need for individual dust plugs that are often misplaced or lost.

The shutter material is crafted from a special translucent substance, enabling technicians to trace the adapter port using a visible light source from the other end of the link. Additionally, this material possesses a low refractive index, effectively reducing the amount of harmful light that may emanate from the adapter during operation.

Offering exceptional flexibility, the 2-channel adapter can be mounted horizontally or vertically, allowing for a multitude of patch panel configurations. This versatility facilitates different density levels, ranging from an impressive 144 fibers per 1RU to an even more remarkable 288 fibers per 1RU. This density is twice that of traditional LC-based patch panels.

FEATURES

- Premium one-piece body design
- Up to 360 fibers per 1RU
- Integrated shutter reduces impact of dust and dirt ingress
- Accepts CS[®] standard and junior connectors
- Supports 200G/400G VSFF connectivity
- Color-coded for rapid identification of fiber-type
- Telcordia, ANSI, TIA and IEC compliant
- Identification aperture for fast and simple connector alignment

APPLICATIONS

- High-density patch panels
- LGX patching modules
- MPO-CS[®] transition modules and panels
- Opto-electronic equipment
- WDM equipment
- MUX and DEMUX equipment
- Mass server consolidation EoR, MoR

KEY BENEFITS

- ✓ **Integrated shutter**

Mechanical Data

	Value
Durability	500 matings per TIA-568
Fixing Method	Snap-fit (<i>adapter without flange</i>) or screw and nut (<i>adapter with flange</i>)
Housing Material Type	Plastic
Fixing Spring Material Type	Metal stainless steel
Sleeve Material	Zirconia
Dust Protection Method	Integrated shutter mechanism (<i>operated by connector insertion</i>)

Optical Data

	Value
Typical Insertion Loss (dB)*	0.10
Max. Insertion Loss (dB)*	0.20

* Based on master grade jumper to low loss random mating test

Environmental Data

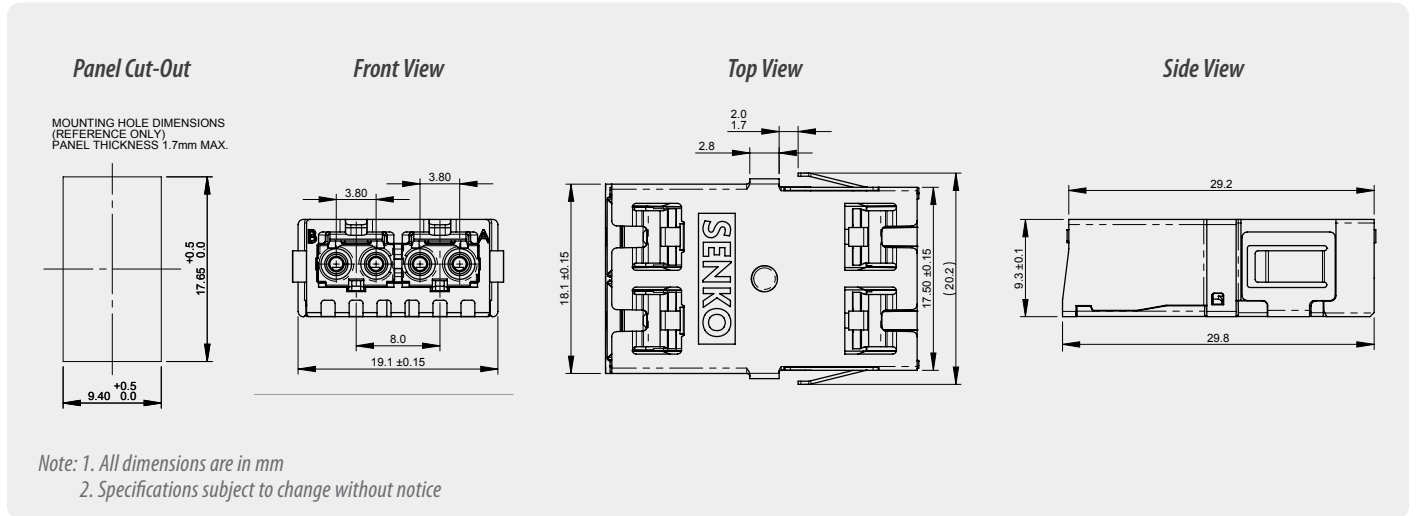
e	Value
Operating Temperature	-40°C to +75°C
RoHS Compliance	2015/863 RoHS
REACH Compliance	Yes
Free of Halogen	Yes
Humidity Resistance	95%

CS[®] ADAPTER

Standard, internal shutters, 2-channel (4F)

SN ADAPTER DATA SHEET

2-Channel Adapter Drawing



ORDERING



CS Adapter with Internal Shutters

ADAPTER TYPE		FLANGE	HOUSING COLOR
682S	CS 2-Channel (4F) Shuttered Adapter	1 With Flange	1 Blue
		2 Without Flange	3 Green
			7 Heather Violet OM4
			9 Aqua OM3

Note: Adapter supplied with protective dust-cap on both sides
Contact sales@senko.com for other channel configurations



682S - 11 ORDER CODE example

SENKO[®]

Advanced Components

sales@senko.com
1-858-623-3300

senko.com/contact