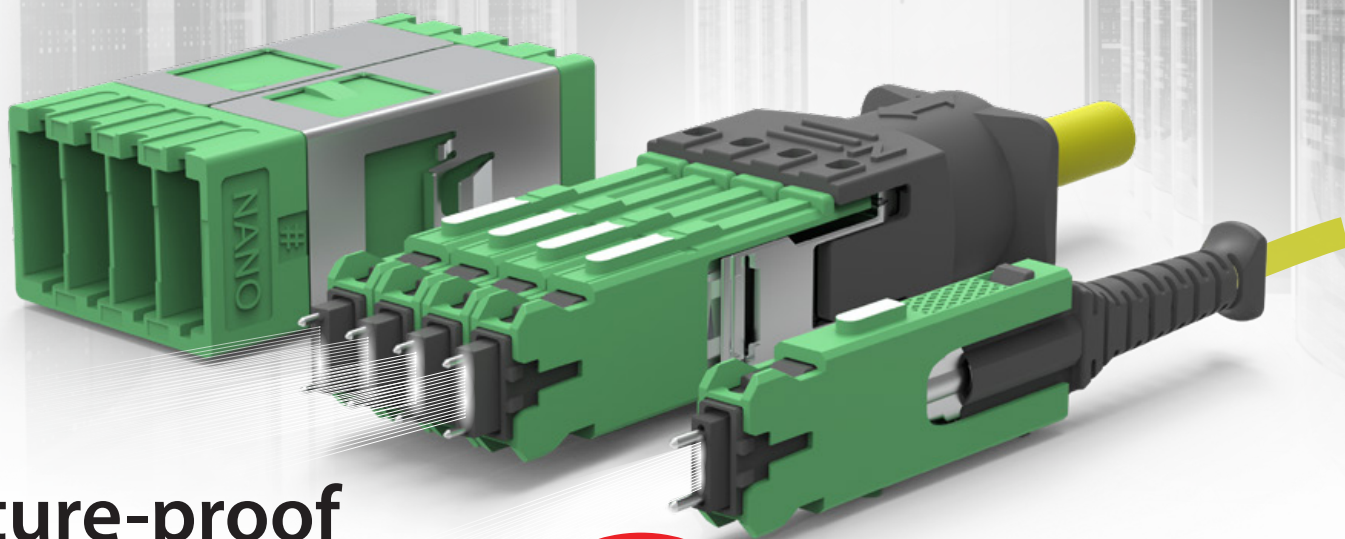


SN[®]-MT CONNECTOR



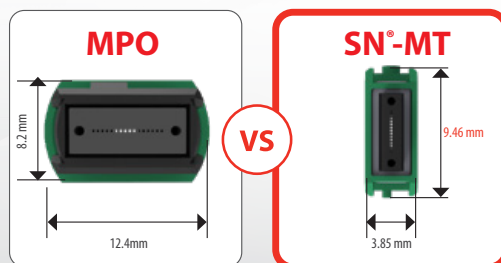
Future-proof Your Network

Optimized for DC Inter-Connects

SN[®]-MT can be used in high-density patch panels to connect legacy MPO-based transceivers today, and then in the future, they can be redeployed to connect next-generation transceivers using the SN[®]-MT interface.

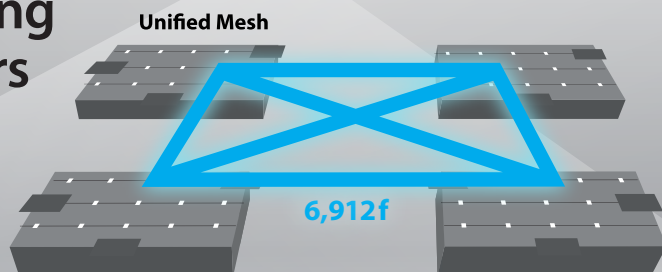
2.7x
denser than
MPO

Footprint size comparison with MPO



1 x SN-MT (16-fibers)

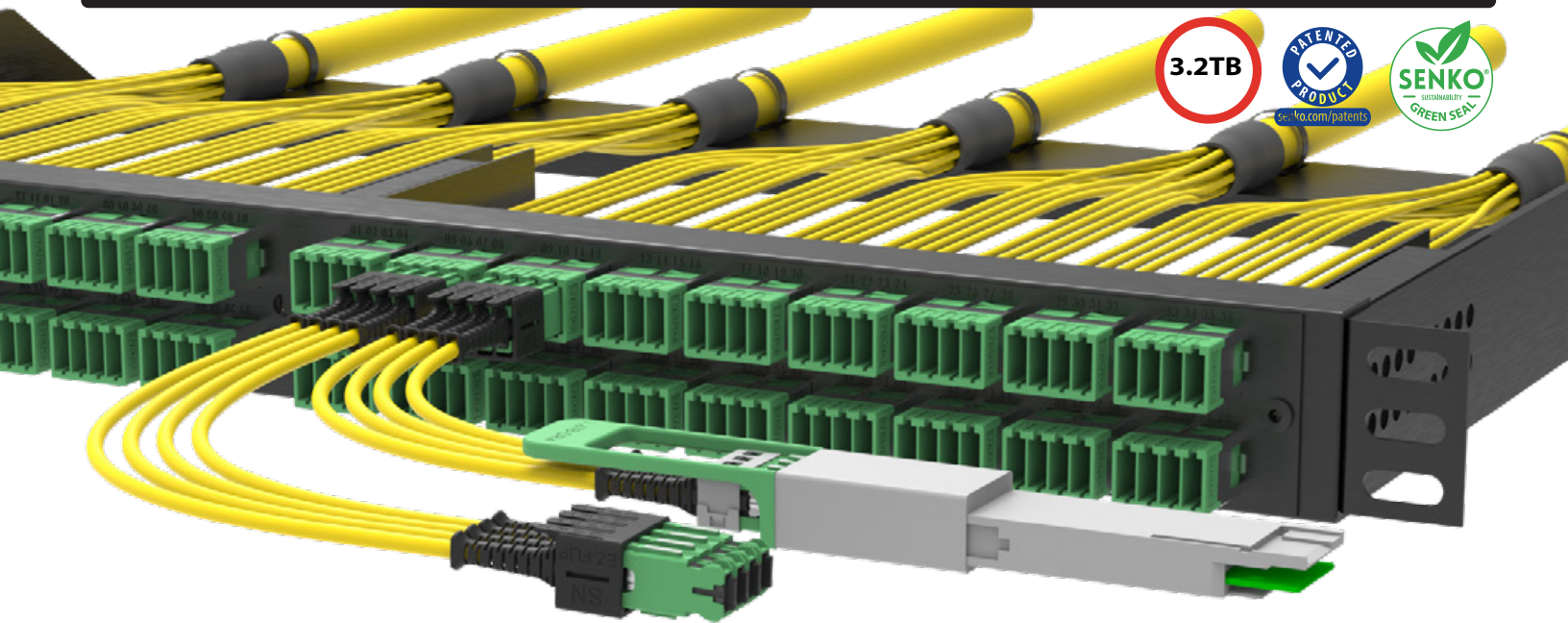
Connecting AI Clusters



FEATURES

- Carries a maximum of 16-fiber in a row
- Same connector footprint as SN duplex
- Carries many features from the SN duplex
- The industry's highest density connector
- Fiber density per 1RU is improved by:
 - 2.7 time over MPO-16F
 - 1.3 time over MPO-32F
- Insertion loss targeted 0.35dB max for SM

SN-MT CONNECTOR



HYPERSCALE DENSIFICATION

Optimized for 200 μ m
Rollable Ribbon



6,912 Fibers



Less Cable Bulk

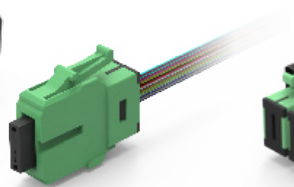


Faster
Deployment
Times

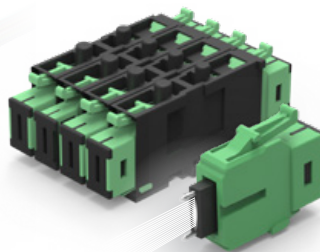
FACEPLATE



BEHIND-THE-WALL



ONBOARD



BACKPLANE

