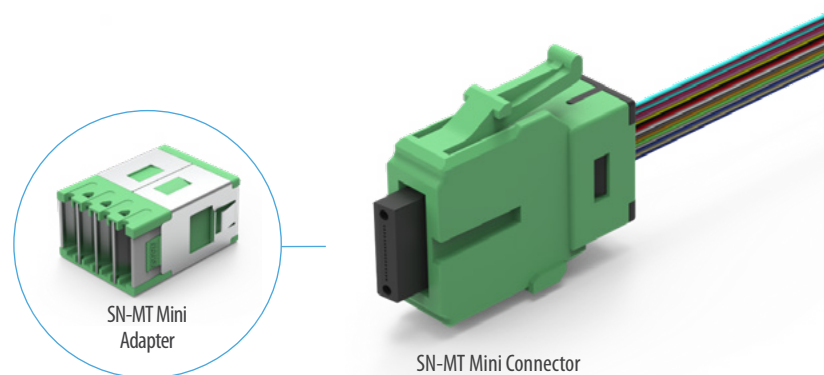


SN®-MT **MINI CONNECTOR** **Multi-fiber (16f), 200 µm** **BTW (Behind The Wall)**



The SN®-MT Mini connector is the shortest in the SN®-MT family and offers users the most space-efficient solution for applications demanding optimized BTW (Behind The Wall) space-saving. In combination with SN® Mini adapters, as much as 14.1mm can be saved compared with standard adapters and connectors, making it the ideal solution for optoelectronic applications requiring circuit boards or other vital components to share the same space as fiber optic connectivity.

The SN®-MT Mini connector has a latch on the upper side of the connector that provides an audible click when it is plugged into an adapter. At the rear of the connector is a boot that will accept 16-fiber ribbon with a 200 µm construction. Mini connectors are most commonly used for applications such as high fiber-count ribbon splicing or optoelectronic applications where additional space is required BTW.

The SN®-MT Mini connector is only compatible with SN®-MT Mini adapters.

FEATURES

- Compatible with 200 µm rollable ribbon cables
- Upper latch mechanism with an audible click
- Reduced connector/boot length
- Low-loss, compact SN®-MT ferrule
- 2.7x denser than MPO16 per 1RU
- 1.3x denser than MPO32 per 1RU
- Max. insertion loss 0.35dB for SM
- No special adapter required

APPLICATIONS

- High-density ribbon splicing
- Pre-terminated fiber-management
- Co-packaged optics
- Coherent optics
- Optoelectronic equipment panels

KEY BENEFITS

- ✓ **2.7 x denser than MPO**
- ✓ **High fiber-count ribbon splicing**

Mechanical Data

| | Value |
|------------------------|--|
| Durability | 200 matings per GR-326-Core |
| Fiber Count | Multi-fiber (16 Fibers) |
| Cable Suitability | 16-fiber, 200 μm ribbon |
| Ferrule Material | Polymer |
| Dust Protection Method | Removable dust plugs that encapsulate the ferrules |

Optical Data

| | Singlemode | Multimode |
|------------------------------|--|-----------|
| | SM | MM |
| | APC | APC |
| Typical Insertion Loss (dB)* | 0.15 | 0.15 |
| Max. Insertion Loss (dB)* | 0.35 | 0.35 |
| Typical Return Loss (dB)* | ≥60 | ≥45 |
| Ferrule Diameter (μm) | SN-MT ferrule 16-fiber, 200 μm in a single row | |

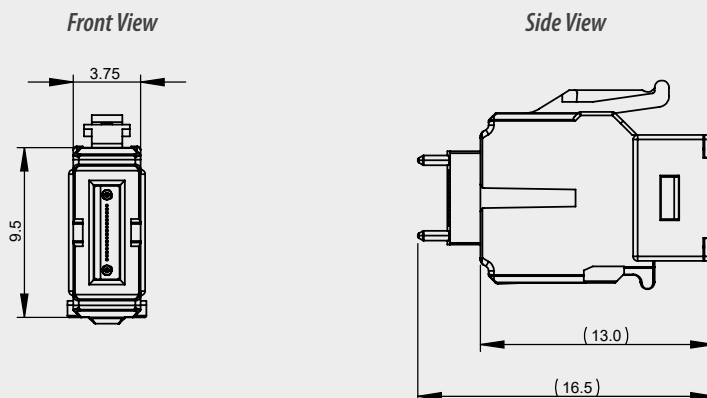
* Based on master grade jumper to low loss random mating test

Environmental Data

| | Value |
|-----------------------|----------------|
| Operating Temperature | -40°C to +75°C |
| RoHS Compliance | 2015/863 RoHS |
| REACH Compliance | Yes |
| Free of Halogen | Yes |
| Humidity Resistance | 95% |

SN®-MT MINI CONNECTORMulti-fiber (16f), 200 μ m, single row

SN®-MT CONNECTOR DATA SHEET

SN®-MT Mini Standard Drawing

Note: 1. All dimensions are in mm
2. Specifications subject to change without notice

ORDERING

SN-MT
SM Mini Connector
APC for 16-fiber 200 μ m Ribbon

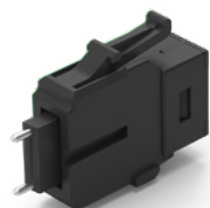
| CONNECTOR TYPE | | GUIDE PIN GENDER | | PERFORMANCE | | FIBER COUNT | | HOUSING COLOR | | BOOT COLOR | |
|----------------|-----------------------------------|------------------|------------------------|-------------|-------------------|-------------|----------|---------------|----------|------------|-------|
| 647 | SN-MT Mini Connector with Ferrule | F | Female (Without Pin) | SL | SM Super Low Loss | 16 | 16 Fiber | G | SM Green | 3 | Black |
| | | M | Male (With Pin) | | | | | | | | |
| | | G | With Changeable Keeper | | | | | | | | |

| CONNECTOR TYPE | | GUIDE PIN GENDER | | PERFORMANCE | | FIBER COUNT | | HOUSING COLOR | | BOOT COLOR | |
|----------------|-----------------------------------|------------------|------------------------|-------------|-------------|-------------|----------|---------------|----------|------------|-------|
| xxx | SN-MT Mini Connector with Ferrule | F | Female (Without Pin) | ML | MM Low Loss | 16 | 16 Fiber | B | MM Black | 3 | Black |
| | | M | Male (With Pin) | | | | | | | | |
| | | G | With Changeable Keeper | | | | | | | | |

Note: Connector supplied with protective dust-cap

Contact sales@senko.com
for availability and to learn more

**Contact
SENKO**



SN-MT
MM Mini Connector
APC for 16-fiber 200 μ m Ribbon

SENKO[®]

Advanced Components

sales@senko.com
1-858-623-3300

senko.com/contact