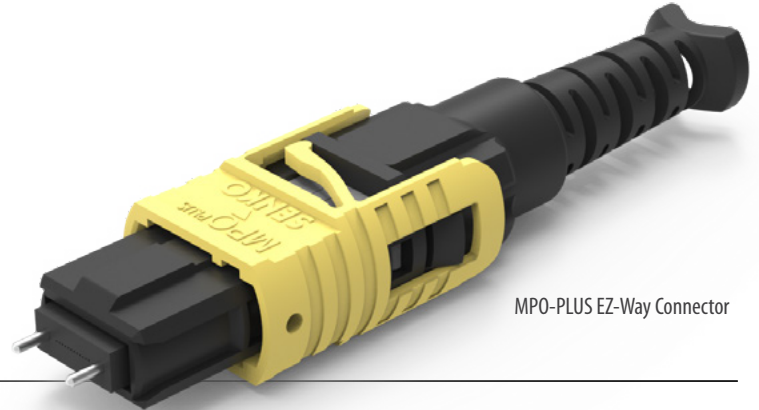


## **MPO-PLUS<sup>®</sup>** **EZ-WAY<sup>™</sup> CONNECTOR** **Soft-Spring Design**



MPO-PLUS EZ-Way Connector

SENKO's soft-spring MPO-PLUS<sup>®</sup> EZ-Way<sup>™</sup> connector is tailored for high-density scenarios where space is at a premium. Its compact design and push-pull boot are ideal for 800G dual belly-to-belly type transceivers and facilitate swift insertion and removal. The patented soft-spring housing design and reverse latch back post support enhanced mechanical strength while reducing the generation of plastic debris seen in traditional MPO, providing an improved user-friendly patching process.

This connector is fully compatible with all industry-standard MPO connectors, and ensures seamless integration with existing systems. Its innovative push-pull boot design allows for quick and effortless patching and removal, even in the densest environments. This connector is ideal for both the Enterprise market and the rapidly evolving Hyperscale market.

Equipped with industry-leading Low Loss ferrules, it achieves a maximum insertion loss of just 0.35 dB for Singlemode premium low loss when used as a mated connection with other MPO-PLUS<sup>®</sup> EZ-Way<sup>™</sup> connectors or leading brand connectors. Featuring a 20N spring for 16f, 24f, and 32f versions, the soft-spring MPO-PLUS<sup>®</sup> EZ-Way<sup>™</sup> connector sets a new standard.

### FEATURES

- Fortified soft-spring design
- Push-pull boot
- Lowest insertion loss on the market
- High density and compact size
- 12/24 fiber center key
- 16/32 fiber offset key
- Compatible with dual MPO transceivers
- Free floating ferrule

### APPLICATIONS

- Artificial intelligence (AI)
- Data center
- FTTx
- Cloud computing
- Broadcasting
- Medical imaging
- High performance computing (HPC)

### KEY BENEFITS

- ✓ **Fortified soft-spring design**
- ✓ **QSFP-DD footprint**
- ✓ **Lowest insertion loss on the market**
- ✓ **Precision metal guide pins**

## Mechanical Data

	Value
Durability	500 matings per TIA-568.3
Fiber Count	Up to 32 fibers
Cable Suitability	3.0 mm round fiber

## Optical Data

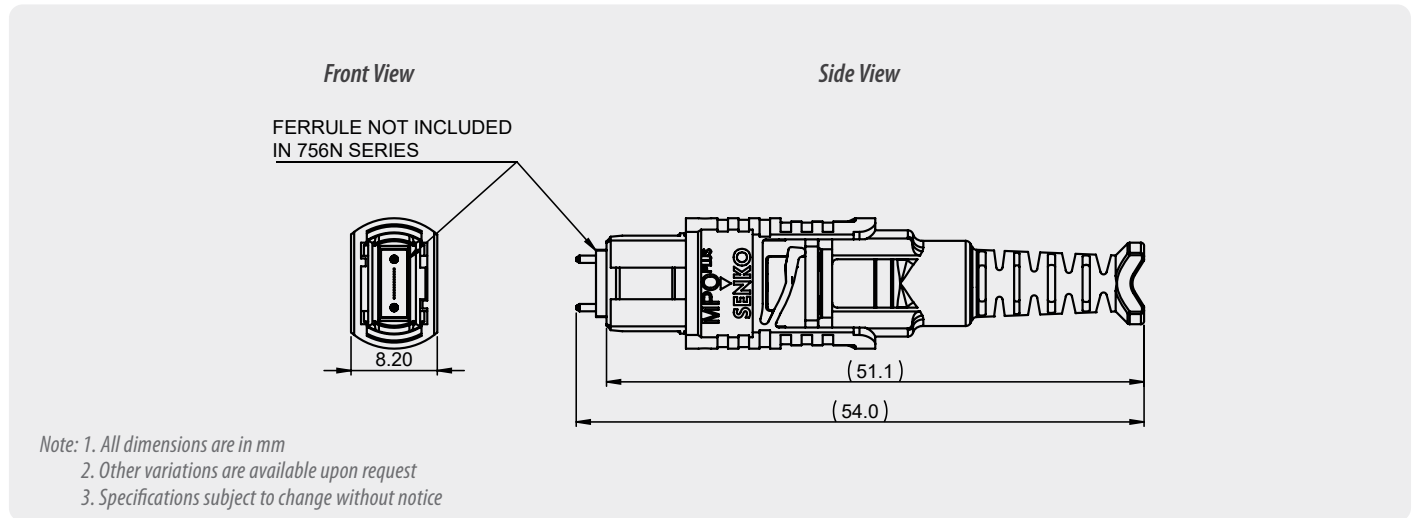
	Singlemode		Multimode	
	APC		MM	
	Low Loss	Standard	Low Loss	Standard
Typical Insertion Loss (dB)* 12-fiber	0.10	0.20	0.08	0.10
Max. Insertion Loss (dB)* 12-fiber	0.25	0.70	0.25	0.50
Typical Insertion Loss (dB)* 24-fiber	0.15	0.25	0.15	0.20
Max. Insertion Loss (dB)* 24-fiber	0.35	1.00	0.35	0.50
Typical Insertion Loss (dB)* 16-fiber	0.15	N/A	0.15	0.20
Max. Insertion Loss (dB)* 16-fiber	0.35	N/A	0.35	0.60
Typical Insertion Loss (dB)* 32-fiber	N/A	N/A	N/A	0.25
Max. Insertion Loss (dB)* 32-fiber	N/A	N/A	N/A	0.60
Typical Return Loss (dB)*	≥60		≥25	

\* Based on master grade jumper to low loss random mating test

## Environmental Data

	Value
Operating Temperature	-40°C to +75°C
RoHS Compliance	Yes
REACH Compliance	Yes

## Connector Drawing



## ORDERING



CONNECTOR  
MPO-PLUS EZ-Way Connector Soft-spring design

Contact [sales@senko.com](mailto:sales@senko.com)  
for availability and to learn more

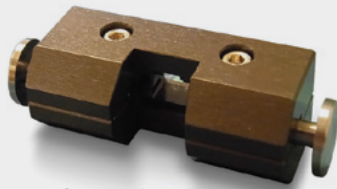


Accessories

MPO-PLUS<sup>®</sup>

Removal Tool

PN: RMT-603



- Removes Outer housing for gender change and ferrule cleaning

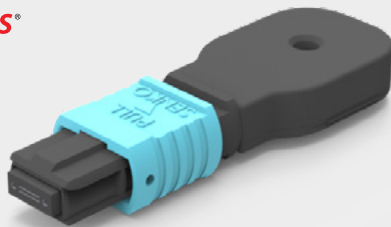
MPO-PLUS<sup>®</sup>

Ribbon Stripper



MPO-PLUS<sup>®</sup>

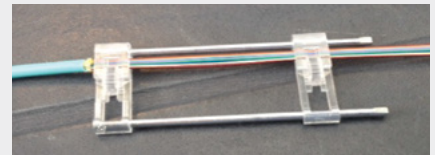
Loopback



MPO-PLUS<sup>®</sup>

Ribbonizer

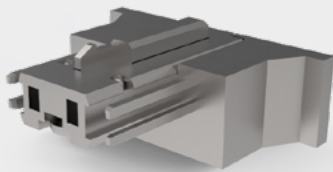
PN: RBN-601



MPO-PLUS<sup>®</sup>

Polarity Changeable Adapter Extraction Tool

PN: RMT-609



MPO-PLUS<sup>®</sup>

Quality Master Jumper



Accessories - Cleaning

Smart Cleaner<sup>™</sup>

PN: SCK-SS-MPO (12/24F Center Key Connectors)  
PN: SCK-SS-MPO-02 (16/32F Offset Key Connectors)

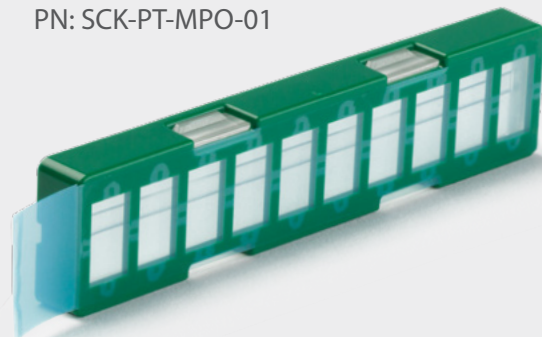
CLEANINGS  
600+



MPO-PLUS<sup>®</sup>

OPTRES Gel Cleaner

PN: SCK-PT-MPO-01



## Accessories - Interferometry

### SUMIX Manta W+ Inspection Scope

PN: SMX-Manta-W+



- Inspects 12 fiber in 2.6 seconds, 24 fiber in 4.5 seconds
- 0.5µm defect detection
- Inspection tips for MPO, CS, SN, LC available

### SUMIX Max QM+ Inspection Scope

PN: MAX-Quantum



- Inspects 12 fiber in 2.6 seconds, 24 fiber in 4.5 seconds
- 0.5µm defect detection

### SMX Manta W+ MPO Polarity and Continuity Module

PN: MPO Verifier



- Works for 8, 12, 24, 48 and 16, 32 fiber MPO
- Auto test and analysis

### SMX Manta W+ Benchtop Holder

PN: MNT-W-Stand



# SENKO<sup>®</sup>

Advanced Components

[sales@senko.com](mailto:sales@senko.com)  
1-858-623-3300

[senko.com/contact](https://senko.com/contact)