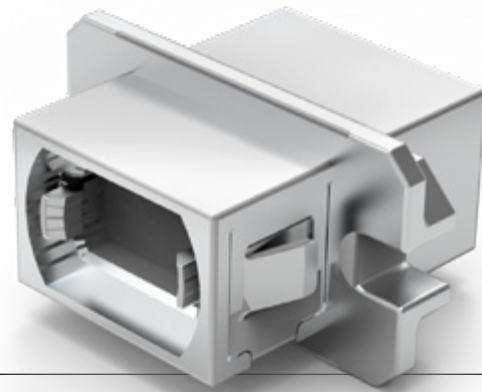


## **MPO-PLUS**<sup>®</sup> **METAL ADAPTER** **7M7 / 7M8 Series**



MPO-PLUS<sup>®</sup>  
Metal Adapter

SENKO's MPO-PLUS<sup>®</sup> Metal adapters are available for either center key MPO connectors (12, 24, 48 and 72 fibers) or offset key MPO connectors (16 and 32 fibers). Compliance to industry standard IEC 61754-7 assures compatibility with all industry standard MPO connectors. These adapters can either be snapped into panel cut-outs or screwed into place using an appropriate screw and nut.

The SENKO MPO-PLUS<sup>®</sup> Metal adapter offers rugged protection and laser eye safety with option shutter mechanism. The metal body is ideal for equipment manufacturers designing EMI protection into their products.

### FEATURES

- Metal housing design
- Internal laser shutter option
- Center or offset keyways
- Flanged and reduced flange

### APPLICATIONS

- Artificial intelligence (AI)
- Electronic equipment
- Broadcasting
- Medical imaging
- Data center
- Cloud computing
- High performance computing (HPC)

### KEY BENEFITS

- ✓ **Eye safety**
- ✓ **EMI protection**
- ✓ **Solid body construction**

## Mechanical Data

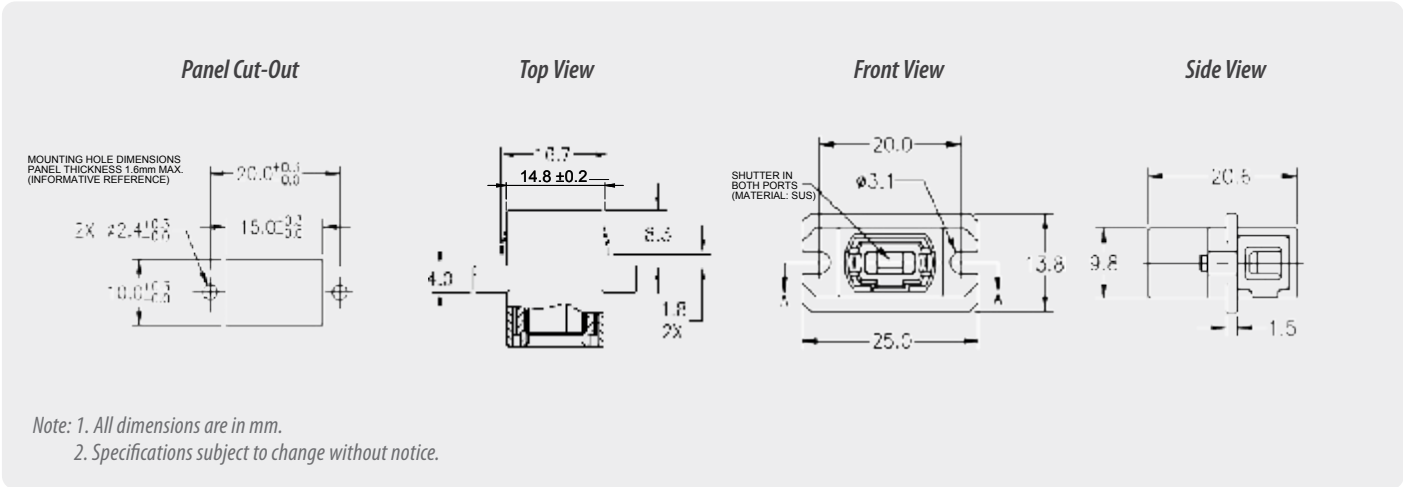
	Value
Durability	50 matings per GR-1435
Fixing Method	Snap-fit or screw and nut ( <i>adapter with flange</i> )
Housing Material Type	Metal
Shutter Material Type	Metal

## Environmental Data

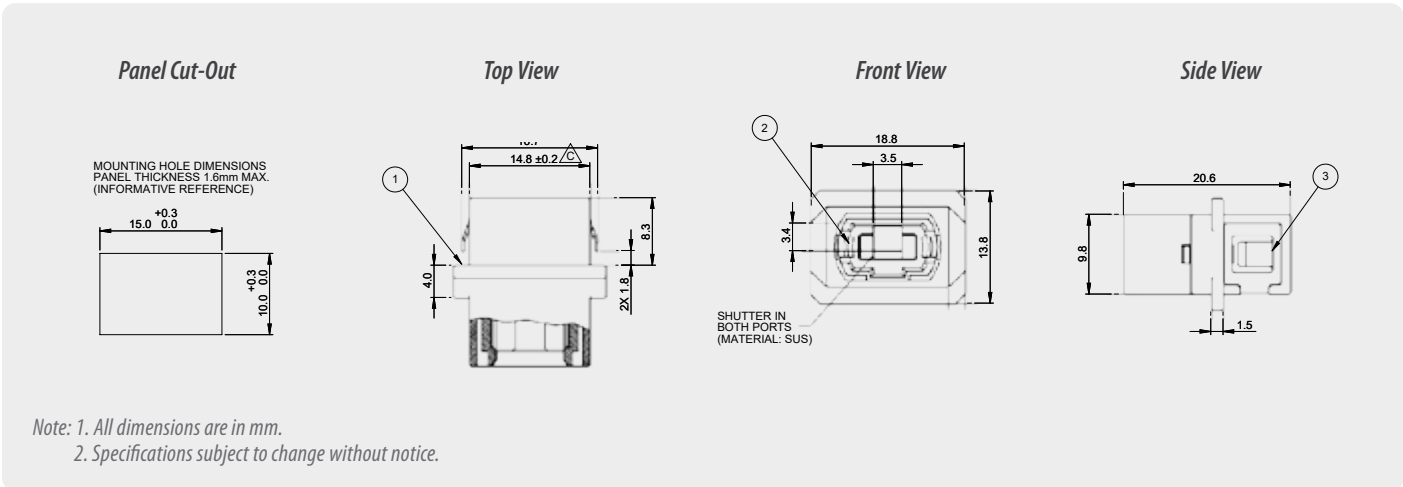
	Value
Operating Temperature	-40°C to +75°C
RoHS Compliance	Yes
REACH Compliance	Yes

**MPO-PLUS<sup>®</sup> METAL ADAPTER**  
**7M7 / 7M8 Series**

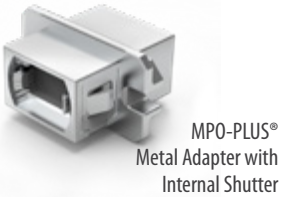
**Adapter Drawing - Center Keyway with Flange and Shutter**



**Adapter Drawing - Center Keyway with No Flange and Shutter**



**ORDERING**



ADAPTER FLANGE		ADAPTER COLOR		SHUTTER	
7M7	Flange (Standard Flange)	1	Regular Key	None	No Shutter
7M8	No Flange (Reduced Flange)	K	Aligned Key	A	Inner Shutter

7M7 1 A ORDER CODE example

### Accessories - Cleaning

#### Smart Cleaner<sup>™</sup>

PN: SCK-SS-MPO (12/24F Center Key Connectors)  
PN: SCK-SS-MPO-02 (16/32F Offset Key Connectors)

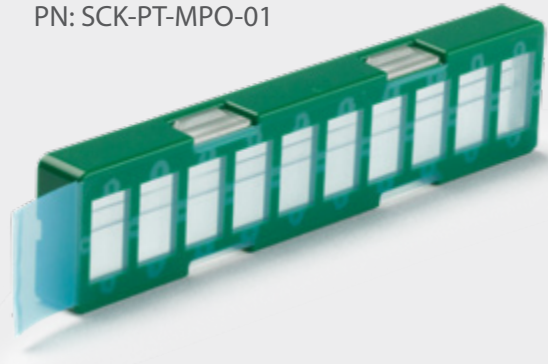
CLEANINGS  
600+



#### MPO-PLUS<sup>®</sup>

#### OPTRES Gel Cleaner

PN: SCK-PT-MPO-01



### Accessories - Interferometry

#### SUMIX Manta W+ Inspection Scope

PN: SMX-Manta-W+



- Inspects 12 fiber in 2.6 seconds, 24 fiber in 4.5 seconds
- 0.5µm defect detection
- Inspection tips for MPO, CS, SN, LC available

#### SUMIX Max QM+ Inspection Scope

PN: MAX-Quantum



- Inspects 12 fiber in 2.6 seconds, 24 fiber in 4.5 seconds
- 0.5µm defect detection

#### SMX Manta W+ MPO Polarity and Continuity Module

PN: MPO Verifier



- Works for 8, 12, 24, 48 and 16, 32 fiber MPO
- Auto test and analysis

#### SMX Manta W+ Benchtop Holder

PN: MNT-W-Stand



# SENKO<sup>®</sup>

Advanced Components

[sales@senko.com](mailto:sales@senko.com)  
1-858-623-3300

[senko.com/contact](https://senko.com/contact)