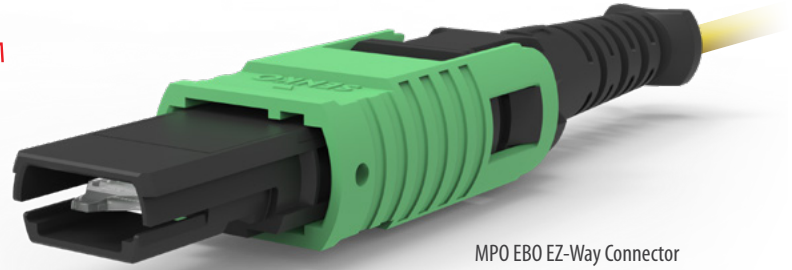


## MPO EBO EZ-WAY™ CONNECTOR Expanded Beam Optics



MPO EBO EZ-Way Connector

SENKO's MPO EBO EZ-WAY™ connector is designed for next-generation data centers, telecom networks, and harsh-environment applications, offering a cutting-edge solution for high-speed optical interconnects. This next gen design incorporates the SENKO EZ-WAY™ push-pull boot feature for high density applications coupled with the non-contact, lensed 3M™ Expanded Beam Optical Ferrule, allowing it to be deployed in environments not always suited to the traditional physical contact products. The non-contact ferrule ensures it is more resistant to dirt, debris, and damage from vibration, thus ensuring stable and reliable connections over time for optimal network performance. It is also compatible with standard MPO Adapters and the SENKO 776 series of MPO SC Footprint adapters, making it suitable for use in legacy applications and panel designs.

### FEATURES

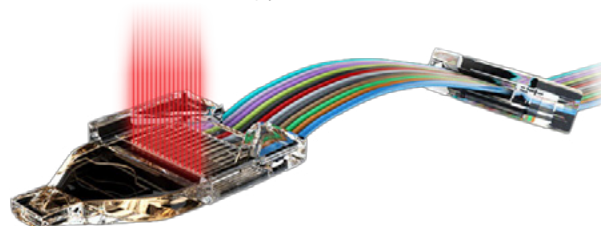
- SENKO's push-pull boot suitable for high density applications
- Resistant to dirt, debris, and vibration damage
- Compatible with standard MPO Adapters and SENKO 776 series of MPO SC Footprint adapters
- Designed in collaboration with Molex for interoperability and intermateability
- Non-contact, lensed 3M™ Expanded Beam Optical Ferrule

### APPLICATIONS

- Telecommunications
- Next-generation data centers
- Harsh environments
- Industrial applications

### KEY BENEFITS

- ✓ **Easy Installation and extraction**
- ✓ **Dust insensitivity**
- ✓ **Fits standard MPO adapters**
- ✓ **Integrating 3M revolutionary EBO ferrule technology**



## Mechanical Data

	Value
Durability	1000 mating cycles

## Optical Data

	Singlemode	Multimode
Insertion Loss (dB)*	<0.70	<0.30
Typical Return Loss (dB)*	≥55	≥25

\* Based on master grade jumper to low loss random mating test

## Environmental Data

	Value
Operating Temperature	-10°C to +60°C

### ORDERING



MPO EBO EZ-Way  
Singlemode Connector

#### CONNECTOR TYPE

MPO EBO EZ-Way Singlemode Connector

*Note: Connector supplied with protective dust-cap*



MPO EBO EZ-Way  
Multimode Connector

#### CONNECTOR TYPE

MPO EBO EZ-Way Multimode Connector

*Note: Connector supplied with protective dust-cap*

Contact [sales@senko.com](mailto:sales@senko.com)  
for availability and to learn more

**Contact  
SENKO**

# SENKO<sup>®</sup>

Advanced Components

[sales@senko.com](mailto:sales@senko.com)  
1-858-623-3300

[senko.com/contact](https://senko.com/contact)