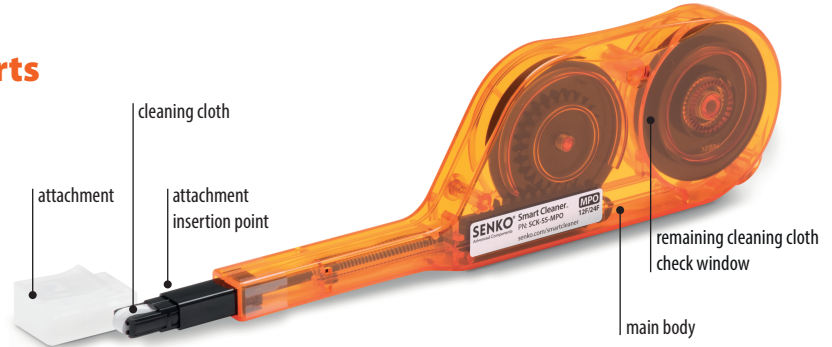


Thank you for choosing Senko's Smart Cleaner optical connector cleaner. This product designed for cleaning MPO-MTP connector ferrule end face with a simple push action. Please read this user's manual carefully and follow its instructions in using this product.



- This product is intended for use as a cleaner for MPO-MTP® connector ferrule end face
- Do not use for any other purposes
- Do not use this product for cleaning lens type optical ports (such as transceivers, reception ports for optical measurement equipment, etc.)

## 1 Names and Descriptions of Parts



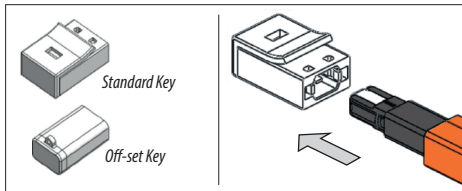
## 2 Compatible Connectors

Product Name (Part No.)	Compatible Connectors	Compatible End Face	# of Usages
SMART CLEANER MPO [SCK-SS-MPO]	MPO/MTP® (Standard Key)	Flat and/or 8° w/ both guide pins and no pin	600 times
SMART CLEANER MPO 16F/32F[SCK-SS-MPO-02]	MPO/MTP® 16F/32F (Offset Key)	Flat and/or 8° w/ both guide pins and no pin	600 times

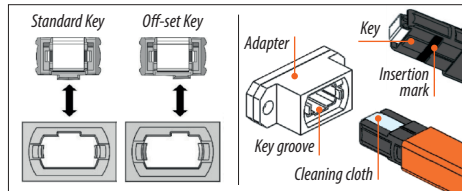
## 3 Cleaning Method

### A) Cleaning a Connector in an Adapter

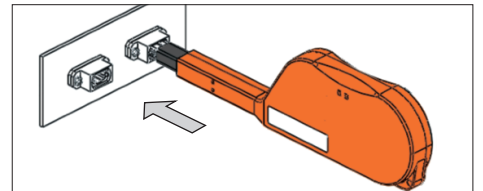
- ① Remove the attachment from the guide.



- ② Align the adapter and the guide key. Insert the guide straight into the adapter until the cleaning cloth or the insertion mark is completely hidden.

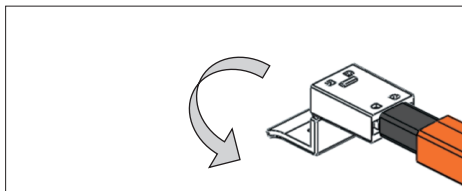


- ③ Push the main body straight into the adaptor. When you hear the click sound, the cleaning is completed Stop pushing and pull straight out.

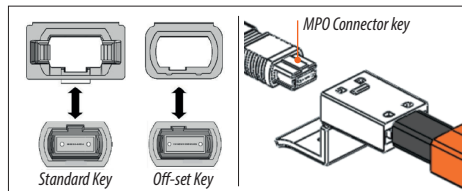


### B) Cleaning an Optical Connector Plug

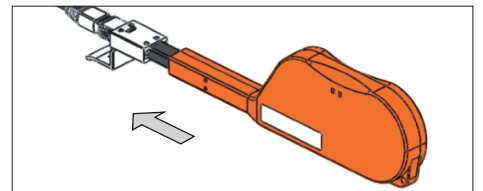
- ① Open the flap of the attachment.



- ② Align the attachment and the connector plug. Insert the connector straight into the attachment and push in until the key is completely hidden.



- ③ Align the attachment and the guide key. Insert the guide straight into the attachment and push in until it reaches the attachment insertion point.



Scan the QR  
code for full  
Contact List

Contact Us      
**senko.com/contact**

senko.com  
Produced by NTT-AT